

---

**Product Name: SRSF3 Rabbit Monoclonal Antibody****Catalog #: AMRe03300**

For research use only.

**Summary**

<b>Description</b>	Recombinant rabbit monoclonal antibody
<b>Host</b>	Rabbit
<b>Application</b>	WB,IHC
<b>Reactivity</b>	Human,Mouse,Rat
<b>Conjugation</b>	Unconjugated
<b>Modification</b>	Unmodified
<b>Isotype</b>	IgG
<b>Clonality</b>	Monoclonal
<b>Form</b>	Liquid
<b>Concentration</b>	0.54mg/ml. The concentration of this product may be batch-dependent.
<b>Storage</b>	Aliquot and store at -20°C (valid for 12 months). Avoid freeze/thaw cycles.
<b>Shipping</b>	Ice bags
<b>Buffer</b>	50mM Tris-Glycine(pH 7.4), 0.15M NaCl, 40% Glycerol, 0.01% Sodium azide and 0.05% protective protein
<b>Purification</b>	Affinity Purification

**Application**

<b>Dilution Ratio</b>	WB 1:500-1:1000,IHC 1:50-1:100
<b>Molecular Weight</b>	Calculated MW: 19 kDa; Observed MW: 19 kDa

**Antigen Information**

<b>Gene Name</b>	SRSF3
<b>Alternative Names</b>	SRSF3; SFRS3; SRP20; Serine/arginine-rich splicing factor 3; Pre-mRNA-splicing factor SRP20; Splicing factor; arginine/serine-rich 3
<b>Gene ID</b>	6428
<b>SwissProt ID</b>	P84103
<b>Immunogen</b>	A synthetic peptide of human SFRS3

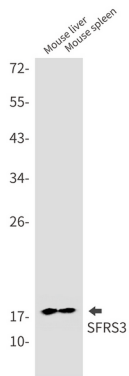
**Background**

May be involved in RNA processing in relation with cellular proliferation and/or maturation.

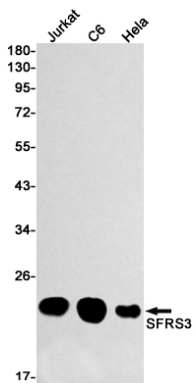
## Research Area

Epigenetics and Nuclear Signaling

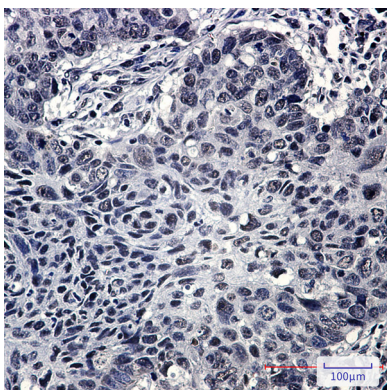
## Image Data



Western blot analysis of SFRS3 in mouse liver, mouse spleen lysates using SRSF3 antibody.



Western blot analysis of SFRS3 in Jurkat, C6, HeLa lysates using SFRS3 antibody.



Immunohistochemistry analysis of paraffin-embedded Human lung cancer using SFRS3 antibody. High-pressure and temperature Sodium Citrate pH 6.0 was used for antigen retrieval.