

---

**Product Name: Cyclin A1/A2 Rabbit Monoclonal Antibody****Catalog #: AMRe03280**

For research use only.

**Summary**

<b>Description</b>	Recombinant rabbit monoclonal antibody
<b>Host</b>	Rabbit
<b>Application</b>	WB,IP
<b>Reactivity</b>	Human
<b>Conjugation</b>	Unconjugated
<b>Modification</b>	Unmodified
<b>Isotype</b>	IgG
<b>Clonality</b>	Monoclonal
<b>Form</b>	Liquid
<b>Concentration</b>	
<b>Storage</b>	Aliquot and store at -20°C (valid for 12 months). Avoid freeze/thaw cycles.
<b>Shipping</b>	Ice bags
<b>Buffer</b>	50mM Tris-Glycine(pH 7.4), 0.15M NaCl, 40% Glycerol, 0.01% Sodium azide and 0.05% protective protein
<b>Purification</b>	Affinity Purification

**Application**

<b>Dilution Ratio</b>	WB 1:500-1:1000,IP 1:20-1:50
<b>Molecular Weight</b>	Calculated MW: 52,49 kDa; Observed MW: 52,49 kDa

**Antigen Information**

<b>Gene Name</b>	CCNA2/CCNA1
<b>Alternative Names</b>	CCN1; CCNA; CCNA1; CCNA2; CT146; Cyclin-A; Cyclin-A1; Cyclin-A2
<b>Gene ID</b>	890/8900
<b>SwissProt ID</b>	P20248/P78396
<b>Immunogen</b>	

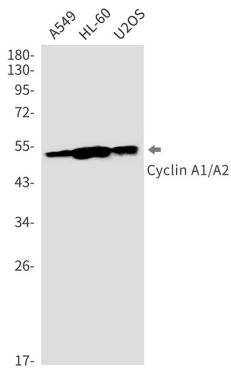
**Background**

May primarily function in the control of the germline meiotic cell cycle and additionally in the control of mitotic cell cycle in some somatic cells. Essential for the control of the cell cycle at the G1/S (start) and the G2/M (mitosis) transitions.

## Research Area

Cell Biology

## Image Data



Western blot analysis of Cyclin A1/A2 in A549, HL-60, U2OS lysates using Cyclin A1/A2 antibody.