

Product Name: Insulin Degrading Enzyme Rabbit Monoclonal Antibody**Catalog #: AMRe03272**

For research use only.

Summary

Description	Recombinant rabbit monoclonal antibody
Host	Rabbit
Application	WB,IHC
Reactivity	Human
Conjugation	Unconjugated
Modification	Unmodified
Isotype	IgG
Clonality	Monoclonal
Form	Liquid
Concentration	0.64mg/ml. The concentration of this product may be batch-dependent.
Storage	Aliquot and store at -20°C (valid for 12 months). Avoid freeze/thaw cycles.
Shipping	Ice bags
Buffer	50mM Tris-Glycine(pH 7.4), 0.15M NaCl, 40% Glycerol, 0.01% Sodium azide and 0.05% protective protein
Purification	Affinity Purification

Application

Dilution Ratio	WB 1:500-1:1000,IHC 1:50-1:100
Molecular Weight	Calculated MW: 118 kDa; Observed MW: 118 kDa

Antigen Information

Gene Name	IDE
Alternative Names	INSULYSIN; Insulin degrading enzyme; IDE
Gene ID	3416
SwissProt ID	P14735
Immunogen	A synthetic peptide of human Insulin degrading enzyme/IDE

Background

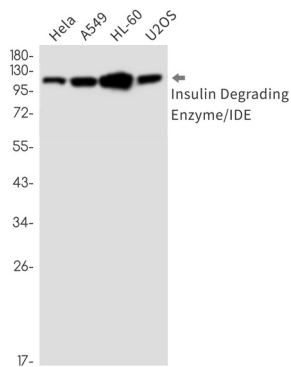
This gene encodes a zinc metallopeptidase that degrades intracellular insulin, and thereby terminates insulins activity, as well as participating in intercellular peptide signalling by degrading diverse peptides such as glucagon, amylin, bradykinin, and

kallidin. The preferential affinity of this enzyme for insulin results in insulin-mediated inhibition of the degradation of other peptides such as beta-amyloid.

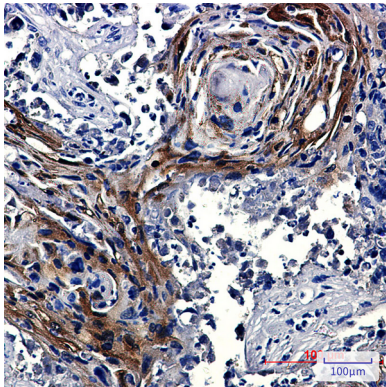
Research Area

Neuroscience

Image Data



Western blot analysis of Insulin Degrading Enzyme/IDE in HeLa, A549, HL-60, U2OS lysates using Insulin Degrading Enzyme antibody.



Immunohistochemistry analysis of paraffin-embedded Human lung cancer using Insulin Degrading Enzyme/IDE antibody. High-pressure and temperature Sodium Citrate pH 6.0 was used for antigen retrieval.