
Product Name: MEF2A/MEF2C Rabbit Monoclonal Antibody**Catalog #: AMRe03269**

For research use only.

Summary

Description	Recombinant rabbit monoclonal antibody
Host	Rabbit
Application	WB
Reactivity	Human, Mouse, Rat
Conjugation	Unconjugated
Modification	Unmodified
Isotype	IgG
Clonality	Monoclonal
Form	Liquid
Concentration	0.64mg/ml. The concentration of this product may be batch-dependent.
Storage	Aliquot and store at -20°C (valid for 12 months). Avoid freeze/thaw cycles.
Shipping	Ice bags
Buffer	50mM Tris-Glycine(pH 7.4), 0.15M NaCl, 40% Glycerol, 0.01% Sodium azide and 0.05% protective protein
Purification	Affinity Purification

Application

Dilution Ratio	WB 1:500-1:1000
Molecular Weight	Calculated MW: 51 kDa; Observed MW: 51 kDa

Antigen Information

Gene Name	MEF2C/MEF2A
Alternative Names	ADCAD1; MEF2; MEF2A; Myocyte enhancer factor 2A; RSRFC4; RSRFC9
Gene ID	4208/4205
SwissProt ID	Q06413/Q02078
Immunogen	

Background

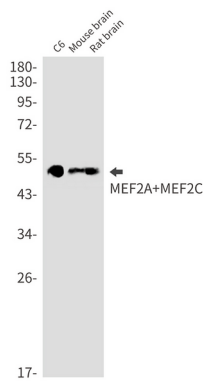
Transcription activator which binds specifically to the MEF2 element present in the regulatory regions of many muscle-specific genes. Controls cardiac morphogenesis and myogenesis, and is also involved in vascular development. Plays an essential role in

hippocampal-dependent learning and memory by suppressing the number of excitatory synapses and thus regulating basal and evoked synaptic transmission. Crucial for normal neuronal development, distribution, and electrical activity in the neocortex.

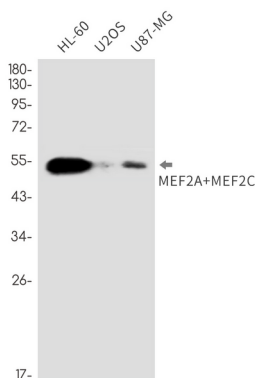
Research Area

Signal Transduction

Image Data



Western blot analysis of MEF2A+MEF2C in C6, mouse brain, rat brain lysates using MEF2A/MEF2C antibody.



Western blot analysis of MEF2A+MEF2C in HL-60, U2OS, U87-MG lysates using MEF2A+MEF2C antibody.