

---

**Product Name: PKC beta 2 Rabbit Monoclonal Antibody****Catalog #: AMRe03264**

For research use only.

**Summary**

<b>Description</b>	Recombinant rabbit monoclonal antibody
<b>Host</b>	Rabbit
<b>Application</b>	WB,IHC,ICC/IF,IP
<b>Reactivity</b>	Human,Rat
<b>Conjugation</b>	Unconjugated
<b>Modification</b>	Unmodified
<b>Isotype</b>	IgG
<b>Clonality</b>	Monoclonal
<b>Form</b>	Liquid
<b>Concentration</b>	0.3mg/ml. The concentration of this product may be batch-dependent.
<b>Storage</b>	Aliquot and store at -20°C (valid for 12 months). Avoid freeze/thaw cycles.
<b>Shipping</b>	Ice bags
<b>Buffer</b>	50mM Tris-Glycine(pH 7.4), 0.15M NaCl, 40% Glycerol, 0.01% Sodium azide and 0.05% protective protein
<b>Purification</b>	Affinity Purification

**Application**

<b>Dilution Ratio</b>	WB 1:500-1:1000,IHC 1:50-1:100,ICC/IF 1:50-1:200,IP 1:20-1:50
<b>Molecular Weight</b>	Calculated MW: 77 kDa; Observed MW: 77 kDa

**Antigen Information**

<b>Gene Name</b>	PRKCB
<b>Alternative Names</b>	PRKCB; PKCB; PRKCB1; Protein kinase C beta type; PKC-B; PKC-beta
<b>Gene ID</b>	5579
<b>SwissProt ID</b>	P05771
<b>Immunogen</b>	A synthetic peptide of human PKC beta 2

**Background**

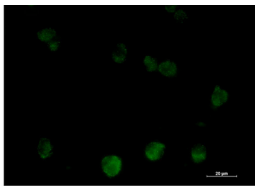
Calcium-activated, phospholipid- and diacylglycerol (DAG)-dependent serine/threonine-protein kinase involved in various cellular processes such as regulation of the B-cell receptor (BCR) signalosome, oxidative stress-induced apoptosis, androgen

receptor-dependent transcription regulation, insulin signaling and endothelial cells proliferation. Plays a key role in B-cell activation by regulating BCR-induced NF-kappa-B activation. Mediates the activation of the canonical NF-kappa-B pathway (NFKB1) by direct phosphorylation of CARD11/CARMA1 at 'Ser-559', 'Ser-644' and 'Ser-652'.

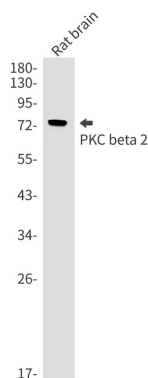
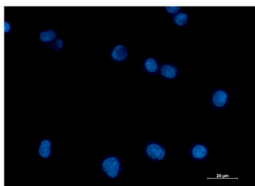
## Research Area

Signal Transduction

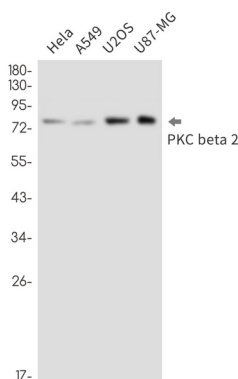
## Image Data



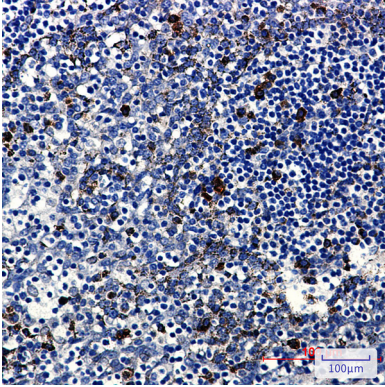
Immunocytochemistry analysis of PKC beta 2 (green) in K562 using PKC beta 2 antibody, and DAPI (blue).



Western blot analysis of PKC beta 2 in rat brain lysates using PKC beta 2 antibody. Observed band size: 77 kDa.



Western blot analysis of PKC beta 2 in HeLa, A549, U2OS, U87-MG lysates using PKC beta 2 antibody



Immunohistochemistry analysis of paraffin-embedded Human tonsil using PKC beta 2 antibody. High-pressure and temperature Sodium Citrate pH 6.0 was used for antigen retrieval.