
Product Name: YTHDC2 Rabbit Monoclonal antibody**Catalog #: AMRe03259**

For research use only.

Summary

Description	Recombinant rabbit monoclonal antibody
Host	Rabbit
Application	WB,IP
Reactivity	Human
Conjugation	Unconjugated
Modification	Unmodified
Isotype	IgG
Clonality	Monoclonal Antibody
Form	Liquid
Concentration	1.68mg/ml. The concentration of this product may be batch-dependent.
Storage	Aliquot and store at -20°C (valid for 12 months). Avoid freeze/thaw cycles.
Shipping	Ice bags
Buffer	50mM Tris-Glycine(pH 7.4), 0.15M NaCl, 40% Glycerol, 0.01% Sodium azide and 0.05% protective protein
Purification	Affinity Purified

Application

Dilution Ratio	WB 1:500-1:1000,IP 1:20-1:50
Molecular Weight	Calculated MW: 161 kDa; Observed MW: 161 kDa

Antigen Information

Gene Name	Ythdc2
Alternative Names	CAHL; hYTHDC2
Gene ID	240255.0
SwissProt ID	B2RR83
Immunogen	Recombinant protein of human YTHDC2

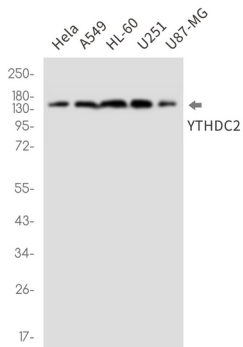
Background

3'-5' RNA helicase that plays a key role in the male and female germline by promoting transition from mitotic to meiotic divisions in stem cells.

Research Area

Epigenetics and Nuclear Signaling

Image Data



Western blot analysis of YTHDC2 in HeLa, A549, HL-60, U251, U87-MG lysates using YTHDC2 antibody.