

**Product Name: Ubiquitin Protein Ligase E3A Rabbit Monoclonal Antibody****Catalog #: AMRe03249**

For research use only.

**Summary**

<b>Description</b>	Recombinant rabbit monoclonal antibody
<b>Host</b>	Rabbit
<b>Application</b>	WB, ICC/IF, IP
<b>Reactivity</b>	Human, Mouse, Rat
<b>Conjugation</b>	Unconjugated
<b>Modification</b>	Unmodified
<b>Isotype</b>	IgG
<b>Clonality</b>	Monoclonal
<b>Form</b>	Liquid
<b>Concentration</b>	0.55mg/ml. The concentration of this product may be batch-dependent.
<b>Storage</b>	Aliquot and store at -20°C (valid for 12 months). Avoid freeze/thaw cycles.
<b>Shipping</b>	Ice bags
<b>Buffer</b>	50mM Tris-Glycine(pH 7.4), 0.15M NaCl, 40% Glycerol, 0.01% Sodium azide and 0.05% protective protein
<b>Purification</b>	Affinity Purification

**Application**

<b>Dilution Ratio</b>	WB 1:500-1:1000, ICC/IF 1:50-1:200, IP 1:20-1:50
<b>Molecular Weight</b>	Calculated MW: 101 kDa; Observed MW: 101 kDa

**Antigen Information**

<b>Gene Name</b>	UBE3A
<b>Alternative Names</b>	Ubiquitin-protein ligase E3A; UBE3A; E6AP; EPVE6AP; HPVE6A
<b>Gene ID</b>	7337
<b>SwissProt ID</b>	Q05086
<b>Immunogen</b>	A synthetic peptide of human UBE3A

**Background**

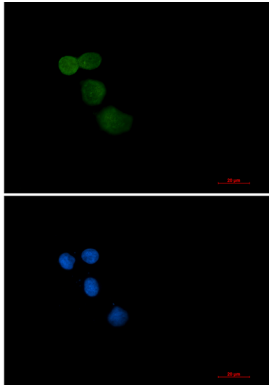
E3 ubiquitin-protein ligase which accepts ubiquitin from an E2 ubiquitin-conjugating enzyme in the form of a thioester and transfers it to its substrates. Several substrates have been identified including the RAD23A and RAD23B, MCM7 (which is

involved in DNA replication), annexin A1, the PML tumor suppressor, and the cell cycle regulator CDKN1B.

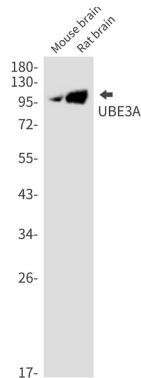
## Research Area

Epigenetics and Nuclear Signaling

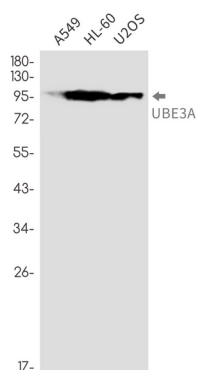
## Image Data



Immunocytochemistry analysis of Ubiquitin Protein Ligase E3A (green) in HeLa using Ubiquitin Protein Ligase E3A antibody, and DAPI (blue).



Western blot analysis of UBE3A in mouse brain, rat brain lysates using UBE3A antibody.



Western blot analysis of UBE3A in A549, HL-60, U2OS lysates using UBE3A antibody