

**Product Name: Ubiquitin Conjugating Enzyme E2 L3
Rabbit Monoclonal antibody
Catalog #: AMRe03247**

Summary

| | |
|------------------------|---|
| Production Name | Ubiquitin Conjugating Enzyme E2 L3 Rabbit Monoclonal antibody |
| Description | Recombinant rabbit monoclonal antibody |
| Host | Rabbit |
| Application | WB,ICC/IF,IP |
| Reactivity | Human,Mouse,Rat |

Performance

| | |
|---------------------|--|
| Conjugation | Unconjugated |
| Modification | Unmodified |
| Isotype | IgG |
| Clonality | Monoclonal Antibody |
| Form | Liquid |
| Storage | Store at 4°C short term. Aliquot and store at -20°C long term. Avoid freeze/thaw cycles. |
| Buffer | 50mM Tris-Glycine(pH 7.4), 0.15M NaCl, 40% Glycerol, 0.01% Sodium azide and 0.05% protective protein |
| Purification | Affinity Purified |

Immunogen

| | |
|--------------------------|----------------------------|
| Gene Name | UBE2L3 |
| Alternative Names | E2-F1; L-UBC; UBCH7; UbcM4 |
| Gene ID | 7332 |
| SwissProt ID | P68036. |

Application

| | |
|-------------------------|--|
| Dilution Ratio | WB 1:500-1:1000,ICC/IF 1:50-1:200,IP 1:20-1:50 |
| Molecular Weight | Calculated MW: 18 kDa; Observed MW: 18 kDa |

**Product Name: Ubiquitin Conjugating Enzyme E2 L3
Rabbit Monoclonal antibody
Catalog #: AMRe03247**

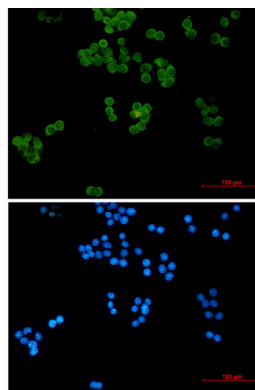


Background

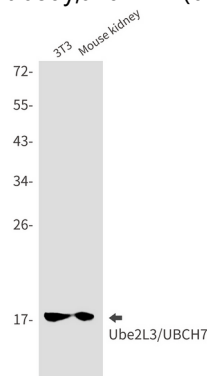
Ubiquitin-conjugating enzyme E2 that specifically acts with HECT-type and RBR family E3 ubiquitin-protein ligases.

Research Area

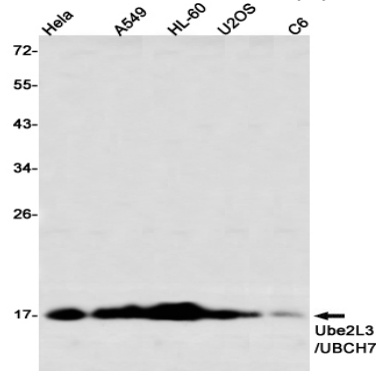
Image Data



Immunocytochemistry analysis of Ubiquitin Conjugating Enzyme E2 L3 (green) in HeLa using Ubiquitin Conjugating Enzyme E2 L3 antibody, and DAPI (blue).



Western blot analysis of Ube2L3/UBCH7 in 3T3, mouse kidney lysates using Ube2L3/UBCH7 antibody.



**Product Name: Ubiquitin Conjugating Enzyme E2 L3
Rabbit Monoclonal antibody
Catalog #: AMRe03247**



Western blot analysis of Ube2L3/UBCH7 in HeLa, A549, HL-60, U2OS, C6 lysates using Ube2L3/UBCH7 antibody

Note

For research use only.