

---

**Product Name: TRAPPC2 Rabbit Monoclonal Antibody****Catalog #: AMRe03239**

For research use only.

**Summary**

<b>Description</b>	Recombinant rabbit monoclonal antibody
<b>Host</b>	Rabbit
<b>Application</b>	WB
<b>Reactivity</b>	Human
<b>Conjugation</b>	Unconjugated
<b>Modification</b>	Unmodified
<b>Isotype</b>	IgG
<b>Clonality</b>	Monoclonal
<b>Form</b>	Liquid
<b>Concentration</b>	
<b>Storage</b>	Aliquot and store at -20°C (valid for 12 months). Avoid freeze/thaw cycles.
<b>Shipping</b>	Ice bags
<b>Buffer</b>	50mM Tris-Glycine(pH 7.4), 0.15M NaCl, 40% Glycerol, 0.01% Sodium azide and 0.05% protective protein
<b>Purification</b>	Affinity Purification

**Application**

<b>Dilution Ratio</b>	WB 1:500-1:1000
<b>Molecular Weight</b>	Calculated MW: 16 kDa; Observed MW: 16 kDa

**Antigen Information**

<b>Gene Name</b>	TRAPPC2
<b>Alternative Names</b>	SEDL; SEDT; MIP2A; TRS20; ZNF547L; hYP38334; TRAPPC2P1
<b>Gene ID</b>	6399
<b>SwissProt ID</b>	P0DI81
<b>Immunogen</b>	

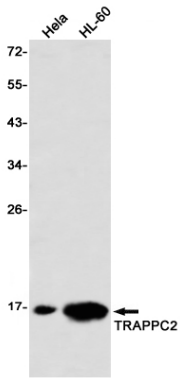
**Background**

Prevents transcriptional repression and induction of cell death by ENO1 (By similarity).

## Research Area

Signal Transduction; Protein Trafficking; Vesicle Transport; Regulation; Golgi Proteins

## Image Data



Western blot analysis of TRAPPC2 in HeLa, HL-60 lysates using TRAPPC2 antibody.