

Product Name: TCP 1 alpha Rabbit Monoclonal antibody
Catalog #: AMRe03224



Summary

Production Name	TCP 1 alpha Rabbit Monoclonal antibody
Description	Recombinant Rabbit Monoclonal antibody
Host	Rabbit
Application	WB,IHC-F,IHC-P,ICC/IF,IP
Reactivity	Human,Hamster

Performance

Conjugation	Unconjugated
Modification	Unmodified
Isotype	IgG
Clonality	Monoclonal Antibody
Form	Liquid
Storage	Store at 4°C short term. Aliquot and store at -20°C long term. Avoid freeze/thaw cycles.
Buffer	50mM Tris-Glycine(pH 7.4), 0.15M NaCl, 40% Glycerol, 0.01% Sodium azide and 0.05% protective protein
Purification	Affinity Purified

Immunogen

Gene Name	TCP1
Alternative Names	TCP1; CCT1; CCTA; T-complex protein 1 subunit alpha; TCP-1-alpha; CCT-alpha
Gene ID	6950
SwissProt ID	P17987.

Application

Dilution Ratio	WB: 1:500-1:1000 IHC: 1:50-1:100 IF: 1:50-1:200 IP: 1:20
Molecular Weight	Calculated MW: 60 kDa; Observed MW: 60 kDa

Background

Product Name: TCP 1 alpha Rabbit Monoclonal antibody
Catalog #: AMRe03224

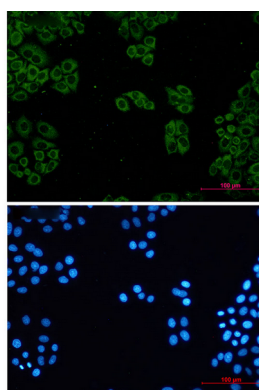


Molecular chaperone; assists the folding of proteins upon ATP hydrolysis. As part of the BBS/CCT complex may play a role in the assembly of BBSome, a complex involved in ciliogenesis regulating transports vesicles to the cilia. Known to play a role, in vitro, in the folding of actin and tubulin.

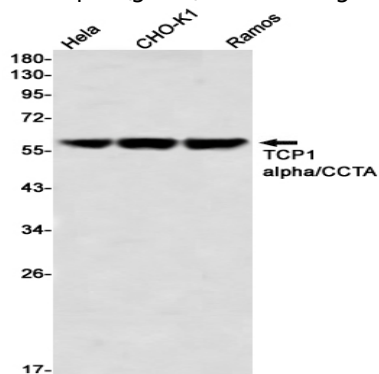
Research Area

Signal Transduction

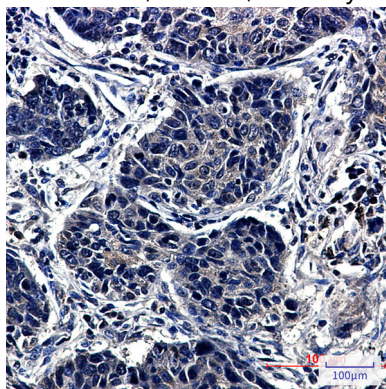
Image Data



Immunocytochemistry analysis of TCP 1 alpha (green) in Hela using TCP 1 alpha antibody, and DAPI (blue).



Western blot analysis of TCP1 alpha/CCTA in Hela, CHO-K1, Ramos lysates using TCP1 alpha/CCTA antibody.



Immunohistochemistry analysis of paraffin-embedded Human lung cancer tissue using TCP1 alpha/CCTA antibody. High-

Product Name: TCP 1 alpha Rabbit Monoclonal antibody
Catalog #: AMRe03224



pressure and temperature Sodium Citrate pH 6.0 was used for antigen retrieval.

Note

For research use only.