

Product Name: Synapsin 2 Rabbit Monoclonal Antibody**Catalog #: AMRe03220**

For research use only.

Summary

Description	Recombinant rabbit monoclonal antibody
Host	Rabbit
Application	WB,IHC
Reactivity	Human,Mouse,Rat
Conjugation	Unconjugated
Modification	Unmodified
Isotype	IgG
Clonality	Monoclonal
Form	Liquid
Concentration	0.54mg/ml. The concentration of this product may be batch-dependent.
Storage	Aliquot and store at -20°C (valid for 12 months). Avoid freeze/thaw cycles.
Shipping	Ice bags
Buffer	50mM Tris-Glycine(pH 7.4), 0.15M NaCl, 40% Glycerol, 0.01% Sodium azide and 0.05% protective protein
Purification	Affinity Purification

Application

Dilution Ratio	WB 1:500-1:1000,IHC 1:50-1:100
Molecular Weight	Calculated MW: 63 kDa; Observed MW: 63 kDa

Antigen Information

Gene Name	SYN2
Alternative Names	SYN 2; SYN II; SYN IIa; SYN IIb; SYN2; Synapsin2; SynapsinII; SYNII; SYNIIa; SYNIIb
Gene ID	6854
SwissProt ID	Q92777
Immunogen	A synthetic peptide of human Synapsin II

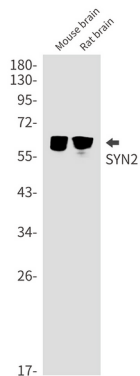
Background

Synapsin II is a member of the synapsin gene family. Synapsins are neuronal phosphoproteins which associate with the cytoplasmic surface of synaptic vesicles.

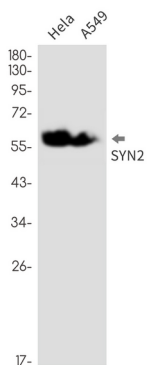
Research Area

Signal Transduction

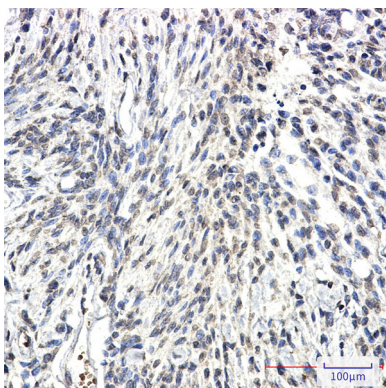
Image Data



Western blot analysis of SYN2 in mouse brain, rat brain lysates using Synapsin 2 antibody.



Western blot analysis of SYN2 in HeLa, A549 lysates using SYN2 antibody.



Immunohistochemistry analysis of paraffin-embedded Human Brain using SYN2 antibody. High-pressure and temperature Sodium Citrate pH 6.0 was used for antigen retrieval.