
Product Name: Superoxide Dismutase 1 Rabbit Monoclonal Antibody**Catalog #: AMRe03216**

For research use only.

Summary

Description	Recombinant rabbit monoclonal antibody
Host	Rabbit
Application	WB,IHC,ICC/IF
Reactivity	Human,Rat
Conjugation	Unconjugated
Modification	Unmodified
Isotype	IgG
Clonality	Monoclonal
Form	Liquid
Concentration	0.54mg/ml. The concentration of this product may be batch-dependent.
Storage	Aliquot and store at -20°C (valid for 12 months). Avoid freeze/thaw cycles.
Shipping	Ice bags
Buffer	50mM Tris-Glycine(pH 7.4), 0.15M NaCl, 40% Glycerol, 0.01% Sodium azide and 0.05% protective protein
Purification	Affinity Purification

Application

Dilution Ratio	WB 1:500-1:1000,IHC 1:50-1:100,ICC/IF 1:50-1:200
Molecular Weight	Calculated MW: 16 kDa; Observed MW: 16 kDa

Antigen Information

Gene Name	SOD1
Alternative Names	SOD1; Superoxide dismutase [Cu-Zn]; Superoxide dismutase 1; hSod1
Gene ID	6647
SwissProt ID	P00441
Immunogen	Recombinant protein of human Superoxide Dismutase 1

Background

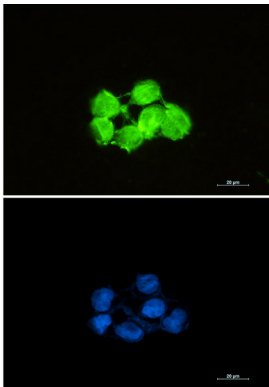
SOD1, Cu/Zn superoxide dismutase, is a major antioxidant enzyme that catalyzes the conversion of superoxide anion to hydrogen peroxide and molecular oxygen. The mechanism by which mutant SOD1 induces the neurodegeneration observed in

ALS is still unclear. Mutant SOD1 proteins become misfolded and consequently oligomerize into high molecular weight species that aggregate and end up in proteinaceous inclusions.

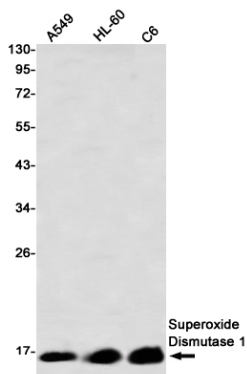
Research Area

Signal Transduction

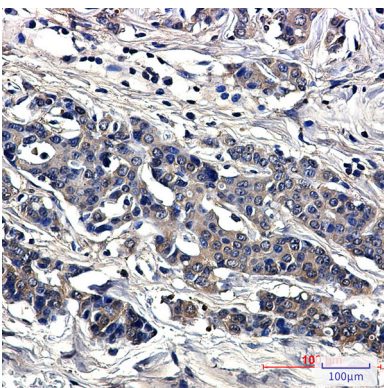
Image Data



Immunocytochemistry analysis of Superoxide Dismutase 1 (green) in HCT116 using Superoxide Dismutase 1 antibody, and DAPI (blue).



Western blot analysis of Superoxide Dismutase 1 in A549, HL-60, C6 lysates using Superoxide Dismutase 1 antibody.



Immunohistochemistry analysis of paraffin-embedded Human breast cancer tissue using Superoxide Dismutase 1 antibody. High-pressure and temperature Sodium Citrate pH 6.0 was used for antigen retrieval.