
Product Name: STAT5b Rabbit Monoclonal Antibody**Catalog #: AMRe03214**

For research use only.

Summary

Description	Recombinant rabbit monoclonal antibody
Host	Rabbit
Application	WB,IHC,ICC/IF,IP
Reactivity	Human,Mouse,Rat
Conjugation	Unconjugated
Modification	Unmodified
Isotype	IgG
Clonality	Monoclonal
Form	Liquid
Concentration	0.45mg/ml. The concentration of this product may be batch-dependent.
Storage	Aliquot and store at -20°C (valid for 12 months). Avoid freeze/thaw cycles.
Shipping	Ice bags
Buffer	50mM Tris-Glycine(pH 7.4), 0.15M NaCl, 40% Glycerol, 0.01% Sodium azide and 0.05% protective protein
Purification	Affinity Purification

Application

Dilution Ratio	WB 1:500-1:1000,IHC 1:50-1:100,ICC/IF 1:50-1:200,IP 1:20-1:50
Molecular Weight	Calculated MW: 90 kDa; Observed MW: 90 kDa

Antigen Information

Gene Name	STAT5B
Alternative Names	STAT5
Gene ID	6777
SwissProt ID	P51692
Immunogen	Recombinant protein of human STAT5b

Background

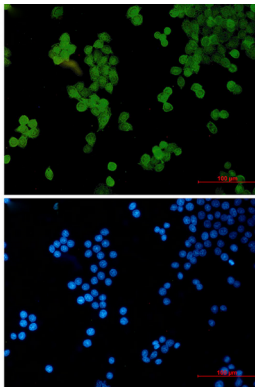
Stat5 is activated in response to a wide variety of ligands including IL-2, GM-CSF, growth hormone and prolactin. Stat5 is constitutively active in some leukemic cell types. Phosphorylated Stat5 is found in some endothelial cells treated with IL-3,

which suggests its involvement in angiogenesis and cell motility. Stat5a and Stat5b are independently regulated and activated in various cell types.

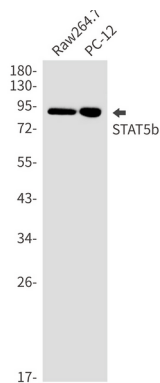
Research Area

Signal Transduction

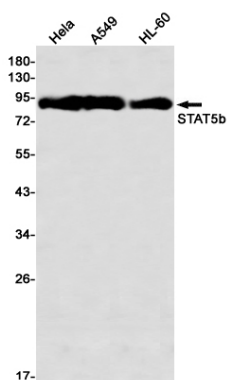
Image Data



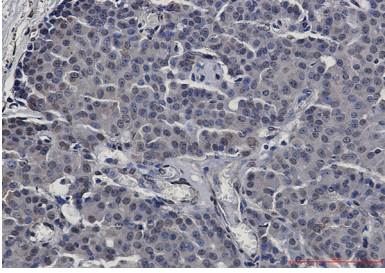
Immunocytochemistry analysis of STAT5b (green) in HeLa using STAT5b antibody, and DAPI (blue).



Western blot analysis of STAT5b in Raw264.7, PC-12 lysates using STAT5b antibody.



Western blot analysis of STAT5b in HeLa, A549, HL-60 lysates using STAT5b antibody



Immunohistochemistry analysis of paraffin-embedded Human breast cancer using STAT5b antibody. High-pressure and temperature Sodium Citrate pH 6.0 was used for antigen retrieval.