

**Product Name: SKP2 Rabbit Monoclonal Antibody**  
**Catalog #: AMRe03204**



## Summary

<b>Production Name</b>	SKP2 Rabbit Monoclonal Antibody
<b>Description</b>	Rabbit Monoclonal antibody
<b>Host</b>	Rabbit
<b>Application</b>	WB, ICC/IF
<b>Reactivity</b>	Human

## Performance

<b>Conjugation</b>	Unconjugated
<b>Modification</b>	Unmodified
<b>Isotype</b>	IgG
<b>Clonality</b>	Monoclonal
<b>Form</b>	Liquid
<b>Storage</b>	Store at 4°C short term. Aliquot and store at -20°C long term. Avoid freeze/thaw cycles.
<b>Buffer</b>	50mM Tris-Glycine(pH 7.4), 0.15M NaCl, 40% Glycerol, 0.01% Sodium azide and 0.05% protective protein
<b>Purification</b>	Affinity Purification

## Immunogen

<b>Gene Name</b>	SKP2
<b>Alternative Names</b>	SKP2; FBXL1; S-phase kinase-associated protein 2; Cyclin-A/CDK2-associated protein p45; F-box protein Skp2; F-box/LRR-repeat protein 1; p45skp2
<b>Gene ID</b>	6502
<b>SwissProt ID</b>	Q13309.

## Application

<b>Dilution Ratio</b>	WB: 1:500-1:1000 IF: 1:50-1:200
<b>Molecular Weight</b>	Calculated MW: 48 kDa; Observed MW: 48 kDa

## Background

**Product Name: SKP2 Rabbit Monoclonal Antibody**  
**Catalog #: AMRe03204**

---

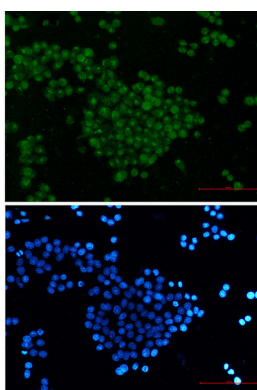


Substrate recognition component of a SCF (SKP1-CUL1-F-box protein) E3 ubiquitin-protein ligase complex which mediates the ubiquitination and subsequent proteasomal degradation of target proteins involved in cell cycle progression, signal transduction and transcription.

## Research Area

Cell Biology

## Image Data



Immunocytochemistry analysis of SKP2 (green) in hela using SKP2 Rabbit mAb, and DAPI (blue).

## Note

For research use only.