
Product Name: SIRP alpha Rabbit Monoclonal Antibody**Catalog #: AMRe03203**

For research use only.

Summary

Description	Recombinant rabbit monoclonal antibody
Host	Rabbit
Application	WB,ICC/IF
Reactivity	Human
Conjugation	Unconjugated
Modification	Unmodified
Isotype	IgG
Clonality	Monoclonal
Form	Liquid
Concentration	0.68mg/ml. The concentration of this product may be batch-dependent.
Storage	Aliquot and store at -20°C (valid for 12 months). Avoid freeze/thaw cycles.
Shipping	Ice bags
Buffer	50mM Tris-Glycine(pH 7.4), 0.15M NaCl, 40% Glycerol, 0.01% Sodium azide and 0.05% protective protein
Purification	Affinity Purification

Application

Dilution Ratio	WB 1:500-1:1000,ICC/IF 1:50-1:200
Molecular Weight	Calculated MW: 55 kDa; Observed MW: 85 kDa

Antigen Information

Gene Name	SIRPA SIRPA; BIT; MFR; MYD1; PTPNS1; SHPS1; SIRP; Tyrosine-protein phosphatase non-receptor
Alternative Names	type substrate 1; SHP substrate 1; SHPS-1; Brain Ig-like molecule with tyrosine-based activation motifs; Bit; CD172 antigen-like family member A; Inhibito
Gene ID	140885
SwissProt ID	P78324
Immunogen	Recombinant protein of human SIRP alpha

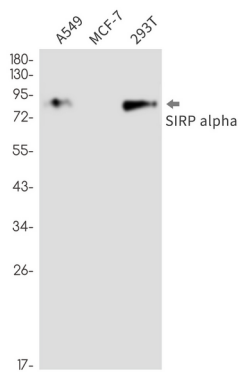
Background

Immunoglobulin-like cell surface receptor for CD47. Acts as docking protein and induces translocation of PTPN6, PTPN11 and other binding partners from the cytosol to the plasma membrane. Supports adhesion of cerebellar neurons, neurite outgrowth and glial cell attachment.

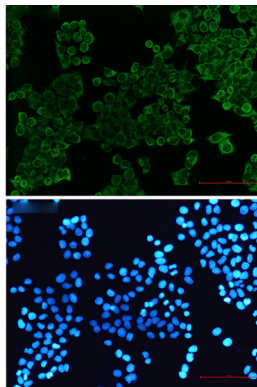
Research Area

Neuroscience

Image Data



Western blot analysis of SIRP alpha in A549, MCF-7, 293T lysates using SIRP alpha antibody.



Immunocytochemistry analysis of SIRP alpha (green) in hela using SIRP alpha antibody, and DAPI (blue)