
Product Name: SFT Rabbit Monoclonal Antibody**Catalog #: AMRe03202**

For research use only.

Summary

Description	Recombinant rabbit monoclonal antibody
Host	Rabbit
Application	WB,IHC,IP
Reactivity	Human,Mouse
Conjugation	Unconjugated
Modification	Unmodified
Isotype	IgG
Clonality	Monoclonal
Form	Liquid
Concentration	0.54mg/ml. The concentration of this product may be batch-dependent.
Storage	Aliquot and store at -20°C (valid for 12 months). Avoid freeze/thaw cycles.
Shipping	Ice bags
Buffer	50mM Tris-Glycine(pH 7.4), 0.15M NaCl, 40% Glycerol, 0.01% Sodium azide and 0.05% protective protein
Purification	Affinity Purification

Application

Dilution Ratio	WB 1:500-1:1000,IHC 1:50-1:100,IP 1:20-1:50
Molecular Weight	Calculated MW: 17 kDa; Observed MW: 17 kDa

Antigen Information

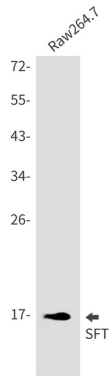
Gene Name	UBE2D1
Alternative Names	ubiquitin conjugating enzyme E2 D1; SFT; UBCH5; UBC4/5; UBCH5A; E2(17)KB1
Gene ID	7321
SwissProt ID	P51668
Immunogen	A synthetic peptide of human SFT

Background

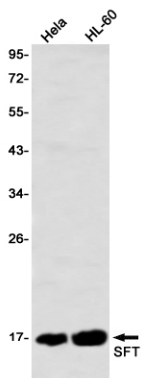
Accepts ubiquitin from the E1 complex and catalyzes its covalent attachment to other proteins.

Research Area

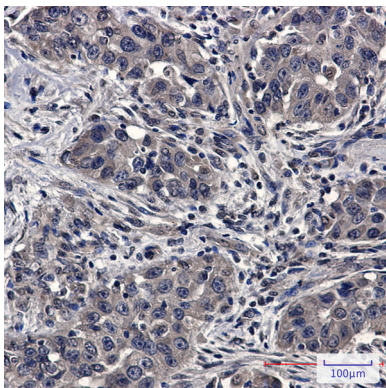
Image Data



Western blot analysis of SFT in Raw264.7 lysates using SFT antibody.



Western blot analysis of SFT in HeLa, HL-60 lysates using SFT antibody.



Immunohistochemistry analysis of paraffin-embedded Human lung cancer using SFT antibody. High-pressure and temperature Sodium Citrate pH 6.0 was used for antigen retrieval.