

**Product Name: SF3B1 Rabbit Monoclonal antibody****Catalog #: AMRe03201**

For research use only.

**Summary**

<b>Description</b>	Recombinant rabbit monoclonal antibody
<b>Host</b>	Rabbit
<b>Application</b>	WB,IHC,ICC/IF
<b>Reactivity</b>	Human,Mouse,Hamster,Rat
<b>Conjugation</b>	Unconjugated
<b>Modification</b>	Unmodified
<b>Isotype</b>	IgG
<b>Clonality</b>	Monoclonal Antibody
<b>Form</b>	Liquid
<b>Concentration</b>	0.16mg/ml. The concentration of this product may be batch-dependent.
<b>Storage</b>	Aliquot and store at -20°C (valid for 12 months). Avoid freeze/thaw cycles.
<b>Shipping</b>	Ice bags
<b>Buffer</b>	50mM Tris-Glycine(pH 7.4), 0.15M NaCl, 40% Glycerol, 0.01% Sodium azide and 0.05% protective protein
<b>Purification</b>	Affinity Purified

**Application**

<b>Dilution Ratio</b>	WB 1:500-1:1000,IHC 1:50-1:100,ICC/IF 1:50-1:200
<b>Molecular Weight</b>	Calculated MW: 146 kDa; Observed MW: 155 kDa

**Antigen Information**

<b>Gene Name</b>	SF3B1
<b>Alternative Names</b>	SF3B1; SAP155; Splicing factor 3B subunit 1; Pre-mRNA-splicing factor SF3b 155 kDa subunit; SF3b155; Spliceosome-associated protein 155; SAP 155
<b>Gene ID</b>	23451
<b>SwissProt ID</b>	O75533
<b>Immunogen</b>	A synthetic peptide of human SF3B1

**Background**

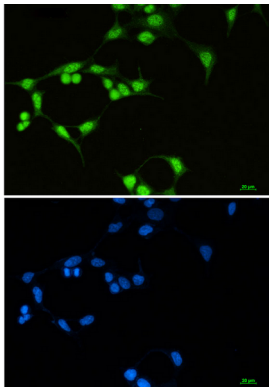
SF3B1 is subunit 1 of the splicing factor 3b protein complex. Splicing factor 3b, together with splicing factor 3a and a 12S RNA

unit, forms the U2 small nuclear ribonucleoproteins complex (U2 snRNP). The splicing factor 3b/3a complex binds pre-mRNA upstream of the intron's branch site in a sequence independent manner and may anchor the U2 snRNP to the pre-mRNA.

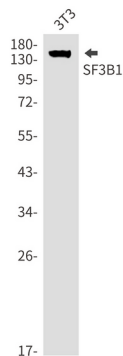
## Research Area

Epigenetics and Nuclear Signaling

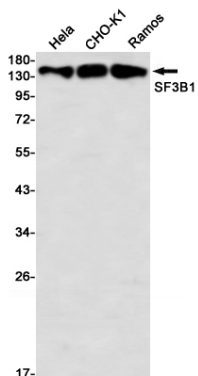
## Image Data



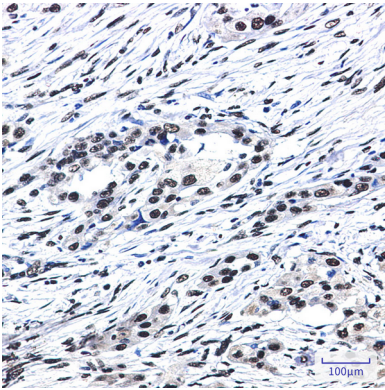
Immunocytochemistry analysis of SF3B1 (green) in 293T using SF3B1 antibody, and DAPI (blue).



Western blot analysis of SF3B1 in 3T3 lysates using SF3B1 antibody.



Western blot analysis of SF3B1 in HeLa, CHO-K1, C6, Ramos lysates using SF3B1 antibody



Immunohistochemistry analysis of paraffin-embedded Human lung cancer using SF3B1 antibody. High-pressure and temperature Sodium Citrate pH 6.0 was used for antigen retrieval.