

---

**Product Name: SEC24D Rabbit Monoclonal antibody****Catalog #: AMRe03197**

For research use only.

**Summary**

<b>Description</b>	Recombinant rabbit monoclonal antibody
<b>Host</b>	Rabbit
<b>Application</b>	WB
<b>Reactivity</b>	Human, Mouse, Rat
<b>Conjugation</b>	Unconjugated
<b>Modification</b>	Unmodified
<b>Isotype</b>	IgG
<b>Clonality</b>	Monoclonal Antibody
<b>Form</b>	Liquid
<b>Concentration</b>	0.28mg/ml. The concentration of this product may be batch-dependent.
<b>Storage</b>	Aliquot and store at -20°C (valid for 12 months). Avoid freeze/thaw cycles.
<b>Shipping</b>	Ice bags
<b>Buffer</b>	50mM Tris-Glycine(pH 7.4), 0.15M NaCl, 40% Glycerol, 0.01% Sodium azide and 0.05% protective protein
<b>Purification</b>	Affinity Purified

**Application**

<b>Dilution Ratio</b>	WB 1:500-1:1000
<b>Molecular Weight</b>	Calculated MW: 113 kDa; Observed MW: 113 kDa

**Antigen Information**

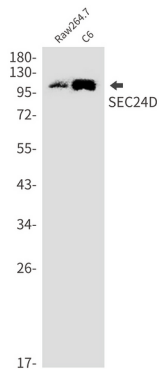
<b>Gene Name</b>	SEC24D
<b>Alternative Names</b>	CLCRP2
<b>Gene ID</b>	9871
<b>SwissProt ID</b>	O94855
<b>Immunogen</b>	A synthetic peptide of human SEC24D

**Background**

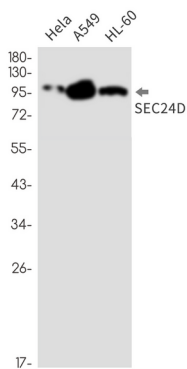
Component of the coat protein complex II (COPII) which promotes the formation of transport vesicles from the endoplasmic reticulum (ER).

## Research Area

## Image Data



Western blot analysis of SEC24D in Raw264.7, C6 lysates using SEC24D antibody.



Western blot analysis of SEC24D in HeLa, A549, HL-60 lysates using SEC24D antibody.