

Product Name: S100 alpha6 Rabbit Monoclonal Antibody**Catalog #: AMRe03193**

For research use only.

Summary

Description	Recombinant rabbit monoclonal antibody
Host	Rabbit
Application	WB, ICC/IF, IP
Reactivity	Human, Mouse
Conjugation	Unconjugated
Modification	Unmodified
Isotype	IgG
Clonality	Monoclonal
Form	Liquid
Concentration	0.54mg/ml. The concentration of this product may be batch-dependent.
Storage	Aliquot and store at -20°C (valid for 12 months). Avoid freeze/thaw cycles.
Shipping	Ice bags
Buffer	50mM Tris-Glycine(pH 7.4), 0.15M NaCl, 40% Glycerol, 0.01% Sodium azide and 0.05% protective protein
Purification	Affinity Purification

Application

Dilution Ratio	WB 1:500-1:1000, ICC/IF 1:50-1:200, IP 1:20-1:50
Molecular Weight	Calculated MW: 10 kDa; Observed MW: 10 kDa

Antigen Information

Gene Name	S100A6
Alternative Names	S100 alpha6; Protein S100-A6; Calcyclin; MLN 4; PRA; CACY; CABP; 5B10
Gene ID	6277
SwissProt ID	P06703
Immunogen	Recombinant protein of human S100 alpha 6/PRA

Background

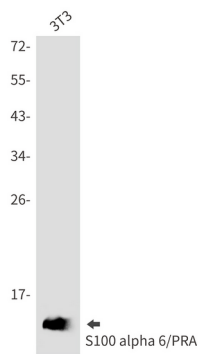
S100A6 (calcyclin) is involved in a number of cellular processes, including exocytosis and cell cycle regulation. In addition, S100A6 interacts with a number of proteins such as SIP, GAPDH, and annexins in a calcium-dependent fashion. Research

studies demonstrate that a down regulation of corresponding S100A6 gene expression causes a decrease in cell proliferation.

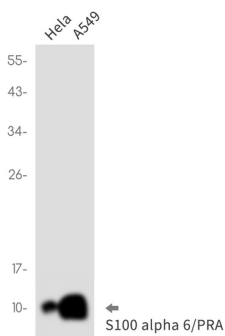
Research Area

Cell Biology

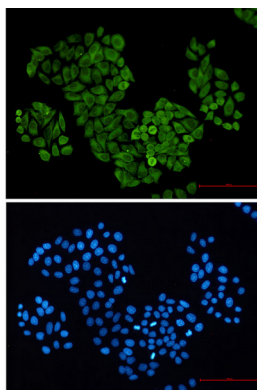
Image Data



Western blot analysis of S100 alpha 6/PRA in 3T3 lysates using S100 alpha6 antibody.



Western blot analysis of S100 alpha 6/PRA in HeLa, A549 lysates using S100 alpha 6/PRA antibody.



Immunocytochemistry analysis of S100 alpha 6/PRA (green) in HeLa cells using S100 alpha 6/PRA antibody and DAPI (blue).