

Product Name: RSK2 Rabbit Monoclonal Antibody**Catalog #: AMRe03192**

For research use only.

Summary

Description	Recombinant rabbit monoclonal antibody
Host	Rabbit
Application	WB,IHC,IP
Reactivity	Human,Hamster
Conjugation	Unconjugated
Modification	Unmodified
Isotype	IgG
Clonality	Monoclonal
Form	Liquid
Concentration	0.68mg/ml. The concentration of this product may be batch-dependent.
Storage	Aliquot and store at -20°C (valid for 12 months). Avoid freeze/thaw cycles.
Shipping	Ice bags
Buffer	50mM Tris-Glycine(pH 7.4), 0.15M NaCl, 40% Glycerol, 0.01% Sodium azide and 0.05% protective protein
Purification	Affinity Purification

Application

Dilution Ratio	WB 1:500-1:1000,IHC 1:50-1:100,IP 1:20-1:50
Molecular Weight	Calculated MW: 84 kDa; Observed MW: 84 kDa

Antigen Information

Gene Name	RPS6KA3 RPS6KA3; ISPK1; MAPKAPK1B; RSK2; Ribosomal protein S6 kinase alpha-3; S6K-alpha-3; 90
Alternative Names	kDa ribosomal protein S6 kinase 3; p90-RSK 3; p90RSK3; Insulin-stimulated protein kinase 1; ISPK-1; MAP kinase-activated protein kinase 1b; MAPK-activated
Gene ID	6197
SwissProt ID	P51812
Immunogen	A synthetic peptide corresponding to target protein

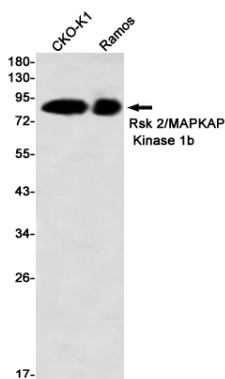
Background

This gene encodes a member of the RSK (ribosomal S6 kinase) family of serine/threonine kinases. This kinase contains 2 non-identical kinase catalytic domains and phosphorylates various substrates, including members of the mitogen-activated kinase (MAPK) signalling pathway. The activity of this protein has been implicated in controlling cell growth and differentiation. Mutations in this gene have been associated with Coffin-Lowry syndrome (CLS).

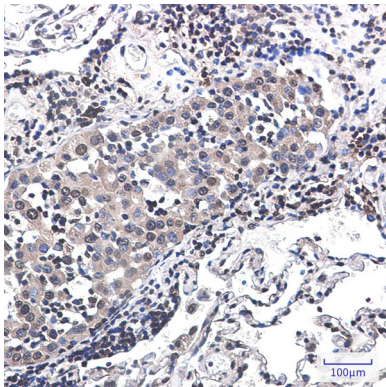
Research Area

Signal Transduction

Image Data



Western blot analysis of Rsk 2/MAPKAP Kinase 1b in CHO-K1, Ramos lysates using RSK2 antibody.



Immunohistochemistry analysis of paraffin-embedded Human lung cancer using Rsk 2/MAPKAP Kinase 1b antibody. High-pressure and temperature Sodium Citrate pH 6.0 was used for antigen retrieval.