

Product Name: RCC1 Rabbit Monoclonal Antibody**Catalog #: AMRe03184**

For research use only.

Summary

Description	Recombinant rabbit monoclonal antibody
Host	Rabbit
Application	WB, ICC/IF, IP
Reactivity	Human
Conjugation	Unconjugated
Modification	Unmodified
Isotype	IgG
Clonality	Monoclonal
Form	Liquid
Concentration	0.67mg/ml. The concentration of this product may be batch-dependent.
Storage	Aliquot and store at -20°C (valid for 12 months). Avoid freeze/thaw cycles.
Shipping	Ice bags
Buffer	50mM Tris-Glycine(pH 7.4), 0.15M NaCl, 40% Glycerol, 0.01% Sodium azide and 0.05% protective protein
Purification	Affinity Purification

Application

Dilution Ratio	WB 1:500-1:1000, ICC/IF 1:50-1:200, IP 1:20-1:50
Molecular Weight	Calculated MW: 45 kDa; Observed MW: 45 kDa

Antigen Information

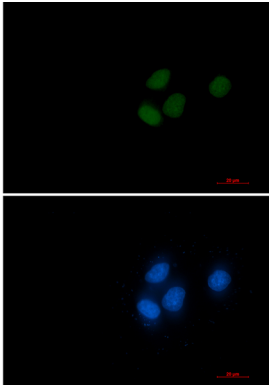
Gene Name	RCC1
Alternative Names	RCC1; RCC1-I; SNHG3-RCC1; CHC1
Gene ID	1104
SwissProt ID	P18754
Immunogen	A synthetic peptide of human RCC1

Background

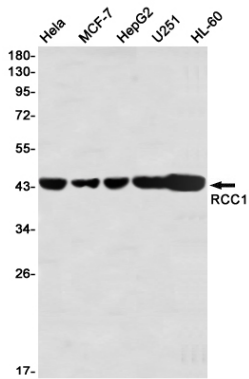
Guanine-nucleotide releasing factor that promotes the exchange of Ran-bound GDP by GTP. Involved in the regulation of onset of chromosome condensation in the S phase. Binds both to the nucleosomes and double-stranded DNA.

Research Area

Image Data



Immunocytochemistry analysis of RCC1 (green) in Hela using RCC1 antibody, and DAPI(blue).



Western blot analysis of RCC1 in Hela, MCF-7, HepG2, U251, HL-60 lysates using RCC1 antibody.