

Product Name: Rad21 Rabbit Monoclonal Antibody**Catalog #: AMRe03175**

For research use only.

Summary

Description	Recombinant rabbit monoclonal antibody
Host	Rabbit
Application	WB,IHC,ICC/IF
Reactivity	Human,Hamster
Conjugation	Unconjugated
Modification	Unmodified
Isotype	IgG
Clonality	Monoclonal
Form	Liquid
Concentration	0.54mg/ml. The concentration of this product may be batch-dependent.
Storage	Aliquot and store at -20°C (valid for 12 months). Avoid freeze/thaw cycles.
Shipping	Ice bags
Buffer	50mM Tris-Glycine(pH 7.4), 0.15M NaCl, 40% Glycerol, 0.01% Sodium azide and 0.05% protective protein
Purification	Affinity Purification

Application

Dilution Ratio	WB 1:500-1:1000,IHC 1:50-1:100,ICC/IF 1:50-1:200
Molecular Weight	Calculated MW: 72 kDa; Observed MW: 130 kDa

Antigen Information

Gene Name	RAD21
Alternative Names	RAD21; HR21; KIAA0078; NXP1; Double-strand-break repair protein rad21 homolog; hHR21; Nuclear matrix protein 1; NXP-1; SCC1 homolog
Gene ID	5885
SwissProt ID	O60216
Immunogen	A synthetic peptide of human Rad21

Background

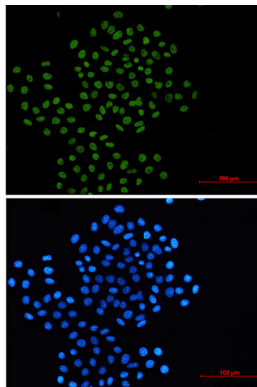
Rad21 is one of the major cohesin subunits that holds sister chromatids together until anaphase, when proteolytic cleavage by

separase, a caspase-like enzyme, allows chromosomal separation. Rad21 interacts with Rec8 to form a cohesin complex that functions in sister chromatid alignment. Rad21 is also involved in the repair of double-strand breaks in DNA and is essential for mitotic growth. Rad21 undergoes a C-terminal cleavage induced by diverse stimuli right before apoptosis.

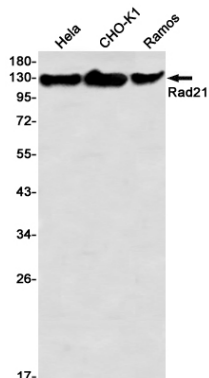
Research Area

Cell Biology

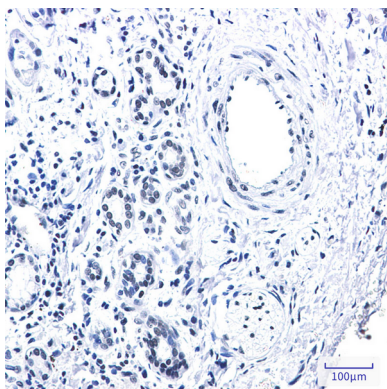
Image Data



Immunocytochemistry analysis of Rad21 (green) in HeLa using Rad21 antibody, and DAPI (blue).



Western blot analysis of Rad21 in HeLa, CHO-K1, Ramos lysates using Rad21 antibody.



Immunohistochemistry analysis of paraffin-embedded Human lung cancer tissue using Rad21 antibody. High-pressure and temperature Sodium Citrate pH 6.0 was used for antigen retrieval.