

Product Name: PEN2 Rabbit Monoclonal Antibody**Catalog #: AMRe03142**

For research use only.

Summary

Description	Recombinant rabbit monoclonal antibody
Host	Rabbit
Application	WB,IHC,ICC/IF
Reactivity	Human,Mouse,Rat
Conjugation	Unconjugated
Modification	Unmodified
Isotype	IgG
Clonality	Monoclonal
Form	Liquid
Concentration	0.45mg/ml. The concentration of this product may be batch-dependent.
Storage	Aliquot and store at -20°C (valid for 12 months). Avoid freeze/thaw cycles.
Shipping	Ice bags
Buffer	50mM Tris-Glycine(pH 7.4), 0.15M NaCl, 40% Glycerol, 0.01% Sodium azide and 0.05% protective protein
Purification	Affinity Purification

Application

Dilution Ratio	WB 1:500-1:1000,IHC 1:50-1:100,ICC/IF 1:50-1:200
Molecular Weight	Calculated MW: 12 kDa; Observed MW: 12 kDa

Antigen Information

Gene Name	PSENEN
Alternative Names	PEN 2; PSEN2; psenen
Gene ID	55851
SwissProt ID	Q9NZ42
Immunogen	A synthetic peptide of human PEN2

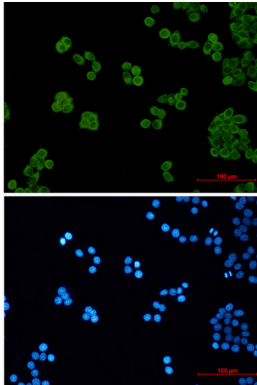
Background

Essential subunit of the gamma-secretase complex, an endoprotease complex that catalyzes the intramembrane cleavage of integral membrane proteins such as Notch receptors and APP (beta-amyloid precursor protein).

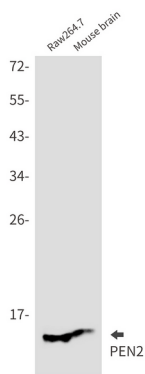
Research Area

Neuroscience

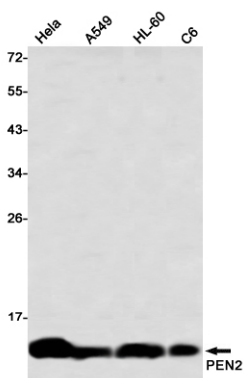
Image Data



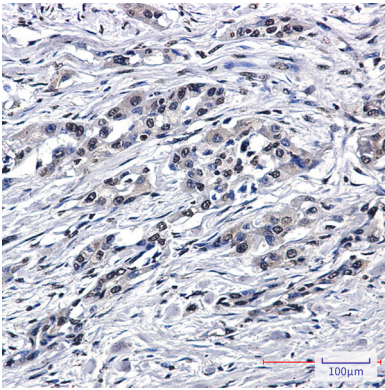
Immunocytochemistry analysis of PEN2 (green) in Hela using PEN2 antibody, and DAPI (blue).



Western blot analysis of PEN2 in Raw264.7, mouse brain lysates using PEN2 antibody.



Western blot analysis of PEN2 in Hela, A549HL-60, C6 lysates using PEN2 antibody



Immunohistochemistry analysis of paraffin-embedded Human lung cancer using PEN2 antibody. High-pressure and temperature Sodium Citrate pH 6.0 was used for antigen retrieval.