

Product Name: PELP1 Rabbit Monoclonal antibody**Catalog #: AMRe03140**

For research use only.

Summary

Description	Recombinant rabbit monoclonal antibody
Host	Rabbit
Application	WB,IHC,ICC/IF
Reactivity	Human
Conjugation	Unconjugated
Modification	Unmodified
Isotype	IgG
Clonality	Monoclonal Antibody
Form	Liquid
Concentration	0.5mg/ml. The concentration of this product may be batch-dependent.
Storage	Aliquot and store at -20°C (valid for 12 months). Avoid freeze/thaw cycles.
Shipping	Ice bags
Buffer	50mM Tris-Glycine(pH 7.4), 0.15M NaCl, 40% Glycerol, 0.01% Sodium azide and 0.05% protective protein
Purification	Affinity Purified

Application

Dilution Ratio	WB 1:500-1:1000,IHC 1:50-1:100,ICC/IF 1:50-1:200
Molecular Weight	Calculated MW: 120 kDa; Observed MW: 160 kDa

Antigen Information

Gene Name	PELP1
Alternative Names	HMX3; MNAR; P160; PELP1; PELP1 proline glutamic acid leucine rich protein 1; PELP1 proline- glutamic
Gene ID	27043
SwissProt ID	Q8IZL8
Immunogen	A synthetic peptide of human PELP1

Background

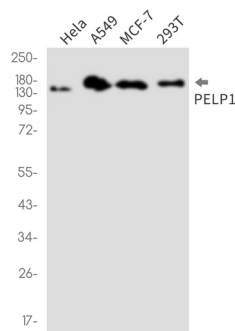
This gene encodes a transcription factor which coactivates transcription of estrogen receptor responsive genes and

corepresses genes activated by other hormone receptors or sequence-specific transcription factors. Expression of this gene is regulated by both members of the estrogen receptor family. This gene may be involved in the progression of several types of cancer. Alternative splicing results in multiple transcript variants.

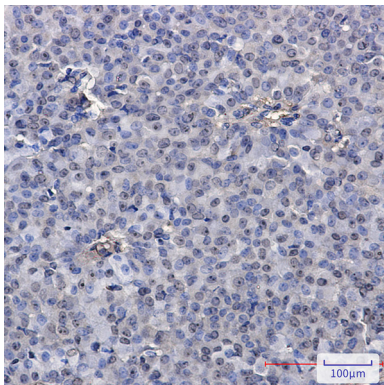
Research Area

Signal Transduction

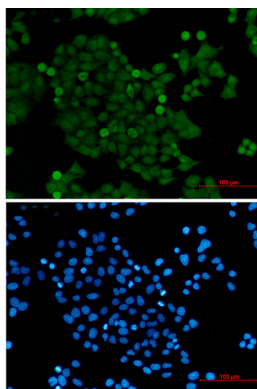
Image Data



Western blot analysis of PELP1 in HeLa, A549, MCF-7, 293T lysates using PELP1 antibody.



Immunohistochemistry analysis of paraffin-embedded Human breast cancer using PELP1 antibody. High-pressure and temperature Sodium Citrate pH 6.0 was used for antigen retrieval.



Immunocytochemistry analysis of PELP1 (green) in HeLa using PELP1 antibody and DAPI (blue).