

---

**Product Name: p23 Rabbit Monoclonal Antibody****Catalog #: AMRe03131**

For research use only.

**Summary**

<b>Description</b>	Recombinant rabbit monoclonal antibody
<b>Host</b>	Rabbit
<b>Application</b>	WB,ICC/IF,IP
<b>Reactivity</b>	Human,Mouse,Rat
<b>Conjugation</b>	Unconjugated
<b>Modification</b>	Unmodified
<b>Isotype</b>	IgG
<b>Clonality</b>	Monoclonal
<b>Form</b>	Liquid
<b>Concentration</b>	0.54mg/ml. The concentration of this product may be batch-dependent.
<b>Storage</b>	Aliquot and store at -20°C (valid for 12 months). Avoid freeze/thaw cycles.
<b>Shipping</b>	Ice bags
<b>Buffer</b>	50mM Tris-Glycine(pH 7.4), 0.15M NaCl, 40% Glycerol, 0.01% Sodium azide and 0.05% protective protein
<b>Purification</b>	Affinity Purification

**Application**

<b>Dilution Ratio</b>	WB 1:500-1:1000,ICC/IF 1:50-1:200,IP 1:20-1:50
<b>Molecular Weight</b>	Calculated MW: 19 kDa; Observed MW: 23 kDa

**Antigen Information**

<b>Gene Name</b>	PTGES3
<b>Alternative Names</b>	PTGES3; P23; TEBP; Prostaglandin E synthase 3; Cytosolic prostaglandin E2 synthase; cPGES; Hsp90 co-chaperone; Progesterone receptor complex p23; Telomerase-binding protein p23
<b>Gene ID</b>	10728
<b>SwissProt ID</b>	Q15185
<b>Immunogen</b>	A synthetic peptide of human p23/PTGES3

**Background**

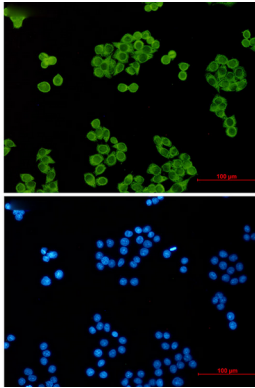
Molecular chaperone that localizes to genomic response elements in a hormone-dependent manner and disrupts receptor-

mediated transcriptional activation, by promoting disassembly of transcriptional regulatory complexes.

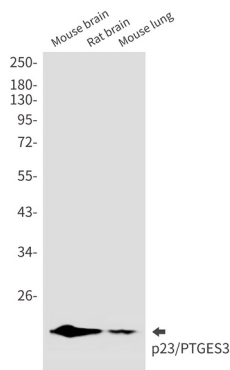
## Research Area

Epigenetics and Nuclear Signaling

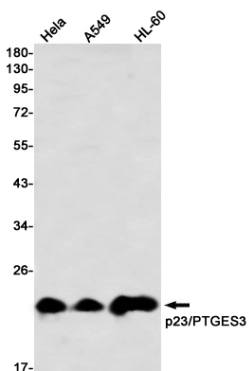
## Image Data



Immunocytochemistry analysis of p23 (green) in HeLa using p23 antibody, and DAPI (blue).



Western blot analysis of p23/PTGES3 in mouse brain, rat brain, mouse lung lysates using p23/PTGES3 antibody.



Western blot analysis of p23/PTGES3 in HeLa, A549, HL-60 lysates using p23/PTGES3 antibody