

---

**Product Name: NR2F2 Rabbit Monoclonal Antibody****Catalog #: AMRe03119**

For research use only.

**Summary**

<b>Description</b>	Recombinant rabbit monoclonal antibody
<b>Host</b>	Rabbit
<b>Application</b>	WB,IHC,IP
<b>Reactivity</b>	Human
<b>Conjugation</b>	Unconjugated
<b>Modification</b>	Unmodified
<b>Isotype</b>	IgG
<b>Clonality</b>	Monoclonal
<b>Form</b>	Liquid
<b>Concentration</b>	0.65mg/ml. The concentration of this product may be batch-dependent.
<b>Storage</b>	Aliquot and store at -20°C (valid for 12 months). Avoid freeze/thaw cycles.
<b>Shipping</b>	Ice bags
<b>Buffer</b>	50mM Tris-Glycine(pH 7.4), 0.15M NaCl, 40% Glycerol, 0.01% Sodium azide and 0.05% protective protein
<b>Purification</b>	Affinity Purification

**Application**

<b>Dilution Ratio</b>	WB 1:500-1:1000,IHC 1:50-1:100,IP 1:20-1:50
<b>Molecular Weight</b>	Calculated MW: 46 kDa; Observed MW: 46 kDa

**Antigen Information**

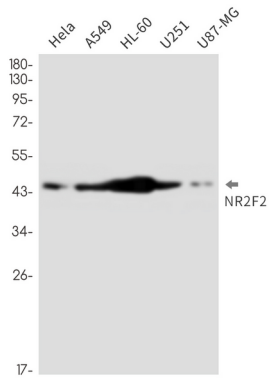
<b>Gene Name</b>	NR2F2 NR2F2; ARP1; TFCOUP2; COUP transcription factor 2; COUP-TF2; Apolipoprotein A-I
<b>Alternative Names</b>	regulatory protein 1; ARP-1; COUP transcription factor II; COUP-TF II; Nuclear receptor subfamily 2 group F member 2
<b>Gene ID</b>	7026
<b>SwissProt ID</b>	P24468
<b>Immunogen</b>	A synthetic peptide of human NR2F2

**Background**

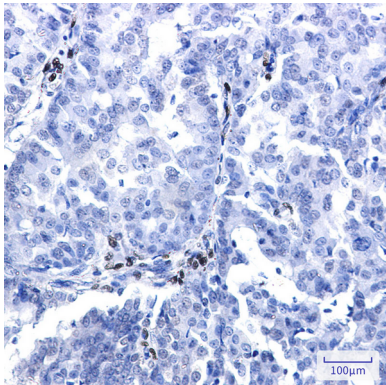
Ligand-activated transcription factor.

## Research Area

## Image Data



Western blot analysis of NR2F2 in HeLa, A549, HL-60, U251, U87-MG lysates using NR2F2 antibody.



Immunohistochemistry analysis of paraffin-embedded Human breast cancer using NR2F2 antibody. High-pressure and temperature Sodium Citrate pH 6.0 was used for antigen retrieval.