
Product Name: NEK6 Rabbit Monoclonal antibody**Catalog #: AMRe03108**

For research use only.

Summary

Description	Recombinant rabbit monoclonal antibody
Host	Rabbit
Application	WB,IP
Reactivity	Human
Conjugation	Unconjugated
Modification	Unmodified
Isotype	IgG
Clonality	Monoclonal Antibody
Form	Liquid
Concentration	1.47mg/ml. The concentration of this product may be batch-dependent.
Storage	Aliquot and store at -20°C (valid for 12 months). Avoid freeze/thaw cycles.
Shipping	Ice bags
Buffer	50mM Tris-Glycine(pH 7.4), 0.15M NaCl, 40% Glycerol, 0.01% Sodium azide and 0.05% protective protein
Purification	Affinity Purified

Application

Dilution Ratio	WB 1:500-1:1000,IP 1:20-1:50
Molecular Weight	Calculated MW: 36 kDa; Observed MW: 36 kDa

Antigen Information

Gene Name	NEK6
Alternative Names	NEK6; NimA related protein kinase 6; SID61512
Gene ID	10783
SwissProt ID	Q9HC98
Immunogen	A synthetic peptide of human NEK6

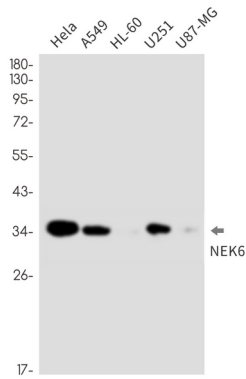
Background

Activated during M phase. Required for chromosome segregation at metaphase-anaphase transition and therefore for mitotic progression. Inhibition of activity results in apoptosis. Phosphorylates KIF11 to promote mitotic spindle formation.

Research Area

Cell Biology

Image Data



Western blot analysis of NEK6 in HeLa, A549, HL-60, U251, U87-MG lysates using NEK6 antibody.