
Product Name: NDEL1 Rabbit Monoclonal Antibody**Catalog #: AMRe03102**

For research use only.

Summary

Description	Recombinant rabbit monoclonal antibody
Host	Rabbit
Application	WB
Reactivity	Human, Mouse
Conjugation	Unconjugated
Modification	Unmodified
Isotype	IgG
Clonality	Monoclonal
Form	Liquid
Concentration	0.5mg/ml. The concentration of this product may be batch-dependent.
Storage	Aliquot and store at -20°C (valid for 12 months). Avoid freeze/thaw cycles.
Shipping	Ice bags
Buffer	50mM Tris-Glycine(pH 7.4), 0.15M NaCl, 40% Glycerol, 0.01% Sodium azide and 0.05% protective protein
Purification	Affinity Purification

Application

Dilution Ratio	WB 1:500-1:1000
Molecular Weight	Calculated MW: 38 kDa; Observed MW: 38 kDa

Antigen Information

Gene Name	NDEL1
Alternative Names	EOPA; MITAP1; NDEL1; NUDEL
Gene ID	81565
SwissProt ID	Q9GZM8
Immunogen	A synthetic peptide of human NDEL1

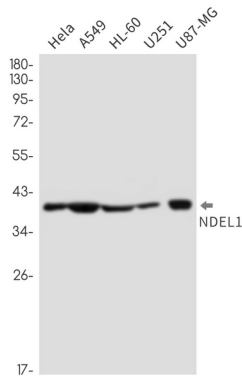
Background

Required for organization of the cellular microtubule array and microtubule anchoring at the centrosome. May regulate microtubule organization at least in part by targeting the microtubule severing protein KATNA1 to the centrosome.

Research Area

Neuroscience

Image Data



Western blot analysis of NDEL1 in HeLa, A549, HL-60, U251, U87-MG lysates using NDEL1 antibody.