
Product Name: alpha Skeletal Muscle Actin Rabbit Monoclonal Antibody**Catalog #:** AMRe03100

For research use only.

Summary

Description	Recombinant rabbit monoclonal antibody
Host	Rabbit
Application	WB,IHC,ICC/IF,IP
Reactivity	Human,Rat,Hamster
Conjugation	Unconjugated
Modification	Unmodified
Isotype	IgG
Clonality	Monoclonal
Form	Liquid
Concentration	0.51mg/ml. The concentration of this product may be batch-dependent.
Storage	Aliquot and store at -20°C (valid for 12 months). Avoid freeze/thaw cycles.
Shipping	Ice bags
Buffer	50mM Tris-Glycine(pH 7.4), 0.15M NaCl, 40% Glycerol, 0.01% Sodium azide and 0.05% protective protein
Purification	Affinity Purification

Application

Dilution Ratio	WB 1:500-1:1000,IHC 1:50-1:100,ICC/IF 1:50-1:200,IP 1:20-1:50
Molecular Weight	Calculated MW: 42 kDa; Observed MW: 42 kDa

Antigen Information

Gene Name	ACTA1
Alternative Names	ACTA1; ACTA; Actin; alpha skeletal muscle; Alpha-actin-1
Gene ID	58
SwissProt ID	P68133
Immunogen	A synthetic peptide of human Actin

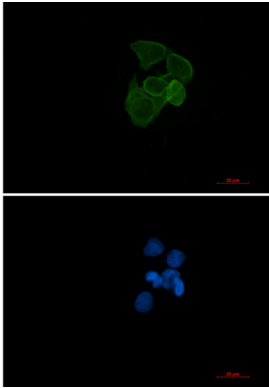
Background

Actins are highly conserved proteins that are involved in various types of cell motility and are ubiquitously expressed in all eukaryotic cells.

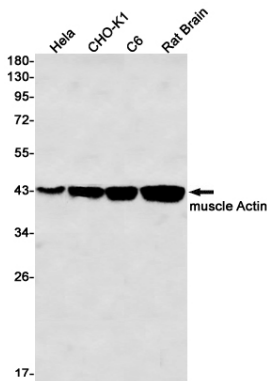
Research Area

Signal Transduction

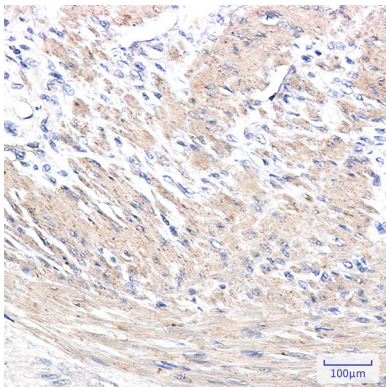
Image Data



Immunocytochemistry analysis of alpha Skeletal Muscle Actin (green) in HeLa using alpha Skeletal Muscle Actin antibody, and DAPI (blue).



Western blot analysis of muscle Actin in HeLa, CHO-K1, C6, rat Brain lysates using muscle Actin antibody.



Immunohistochemistry analysis of paraffin-embedded Human colon cancer tissue using muscle Actin antibody. High-pressure and temperature Sodium Citrate pH 6.0 was used for antigen retrieval.