
Product Name: Meckelin Rabbit Monoclonal Antibody**Catalog #: AMRe03081**

For research use only.

Summary

Description	Recombinant rabbit monoclonal antibody
Host	Rabbit
Application	WB,ICC/IF
Reactivity	Human
Conjugation	Unconjugated
Modification	Unmodified
Isotype	IgG
Clonality	Monoclonal
Form	Liquid
Concentration	0.64mg/ml. The concentration of this product may be batch-dependent.
Storage	Aliquot and store at -20°C (valid for 12 months). Avoid freeze/thaw cycles.
Shipping	Ice bags
Buffer	50mM Tris-Glycine(pH 7.4), 0.15M NaCl, 40% Glycerol, 0.01% Sodium azide and 0.05% protective protein
Purification	Affinity Purification

Application

Dilution Ratio	WB 1:500-1:1000,ICC/IF 1:50-1:200
Molecular Weight	Calculated MW: 112 kDa; Observed MW: 112 kDa

Antigen Information

Gene Name	TMEM67
Alternative Names	MKS3; JBTS6; NPHP11; TNEM67; MECKELIN
Gene ID	91147
SwissProt ID	Q5HYA8
Immunogen	A synthetic peptide of human Meckelin

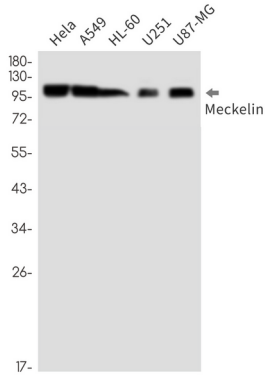
Background

Required for ciliary structure and function.

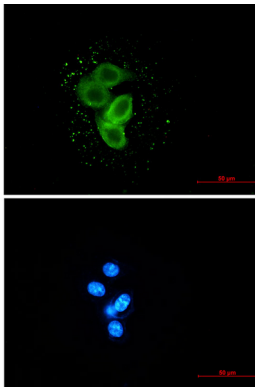
Research Area

Tags & Cell Markers

Image Data



Western blot analysis of Meckelin in Hela, A549, HL-60, U251, U87-MG lysates using Meckelin antibody.



Immunocytochemistry analysis of Meckelin (green) in MCF-7 using Meckelin antibody, and DAPI (blue)