

Product Name: LYRIC Rabbit Monoclonal antibody**Catalog #: AMRe03073**

For research use only.

Summary

Description	Recombinant rabbit monoclonal antibody
Host	Rabbit
Application	WB,IHC,ICC/IF
Reactivity	Human,Mouse,Rat,Hamster
Conjugation	Unconjugated
Modification	Unmodified
Isotype	IgG
Clonality	Monoclonal Antibody
Form	Liquid
Concentration	0.16mg/ml. The concentration of this product may be batch-dependent.
Storage	Aliquot and store at -20°C (valid for 12 months). Avoid freeze/thaw cycles.
Shipping	Ice bags
Buffer	50mM Tris-Glycine(pH 7.4), 0.15M NaCl, 40% Glycerol, 0.01% Sodium azide and 0.05% protective protein
Purification	Affinity Purified

Application

Dilution Ratio	WB 1:500-1:1000,IHC 1:50-1:100,ICC/IF 1:50-1:200
Molecular Weight	Calculated MW: 64 kDa; Observed MW: 75 kDa

Antigen Information

Gene Name	MTDH
Alternative Names	MTDH; AEG1; LYRIC; Protein LYRIC; 3D3/LYRIC; Astrocyte elevated gene-1 protein; AEG-1; Lysine-rich CEACAM1 co-isolated protein; Metadherin; Metastasis adhesion protein
Gene ID	92140
SwissProt ID	Q86UE4
Immunogen	A synthetic peptide of human LYRIC/AEG1

Background

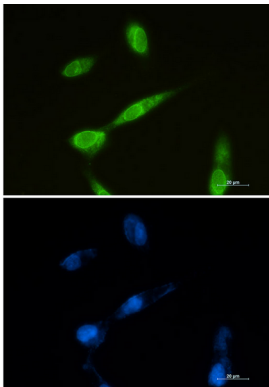
Downregulates SLC1A2/EAAT2 promoter activity when expressed ectopically. Activates the nuclear factor kappa-B (NF-kappa-

B) transcription factor. Promotes anchorage-independent growth of immortalized melanocytes and astrocytes which is a key component in tumor cell expansion.

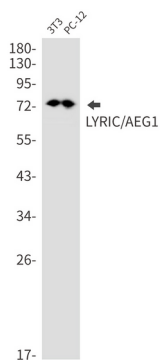
Research Area

Signal Transduction

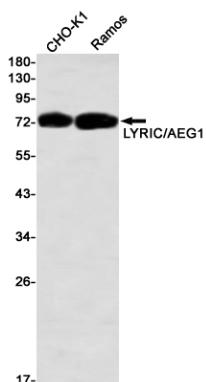
Image Data



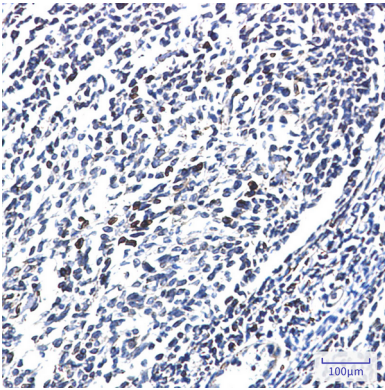
Immunocytochemistry analysis of LYRIC (green) in U87-MG using LYRIC antibody, and DAPI (blue).



Western blot analysis of LYRIC/AEG1 in 3T3, PC-12 lysates using LYRIC/AEG1 antibody.



Western blot analysis of LYRIC/AEG1 in CHO-K1, Ramos lysates using LYRIC/AEG1 antibody



Immunohistochemistry analysis of paraffin-embedded Human tonsil using LYRIC/AEG1 antibody. High-pressure and temperature Sodium Citrate pH 6.0 was used for antigen retrieval.