

Product Name: LMAN1 Rabbit Monoclonal antibody**Catalog #: AMRe03070**

For research use only.

Summary

Description	Recombinant rabbit monoclonal antibody
Host	Rabbit
Application	WB,IHC
Reactivity	Human
Conjugation	Unconjugated
Modification	Unmodified
Isotype	IgG
Clonality	Monoclonal Antibody
Form	Liquid
Concentration	0.29mg/ml. The concentration of this product may be batch-dependent.
Storage	Aliquot and store at -20°C (valid for 12 months). Avoid freeze/thaw cycles.
Shipping	Ice bags
Buffer	50mM Tris-Glycine(pH 7.4), 0.15M NaCl, 40% Glycerol, 0.01% Sodium azide and 0.05% protective protein
Purification	Affinity Purified

Application

Dilution Ratio	WB 1:500-1:1000,IHC 1:50-1:100
Molecular Weight	Calculated MW: 58 kDa; Observed MW: 58 kDa

Antigen Information

Gene Name	LMAN1
Alternative Names	ERGIC5; F5F8D; FMFD1; Gp58; Lman1; MCFD1; MR60
Gene ID	3998
SwissProt ID	P49257
Immunogen	A synthetic peptide of human LMAN1

Background

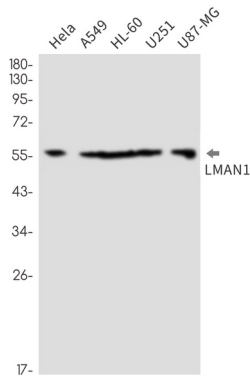
Mannose-specific lectin. May recognize sugar residues of glycoproteins, glycolipids, or glycosylphosphatidyl inositol anchors and may be involved in the sorting or recycling of proteins, lipids, or both. The LMAN1-MCFD2 complex forms a specific cargo

receptor for the ER-to-Golgi transport of selected proteins.

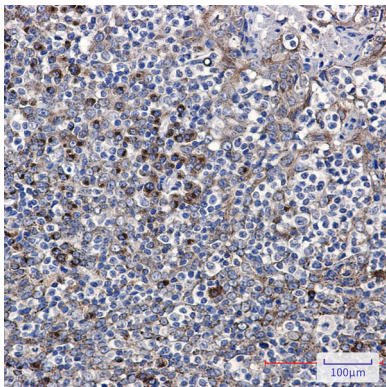
Research Area

Signal Transduction

Image Data



Western blot analysis of LMAN1 in HeLa, A549, HL-60, U251, U87-MG lysates using LMAN1 antibody.



Immunohistochemistry analysis of paraffin-embedded Human tonsil using LMAN1 antibody. High-pressure and temperature Sodium Citrate pH 6.0 was used for antigen retrieval.