

Product Name: LAMP2 Rabbit Monoclonal Antibody**Catalog #: AMRe03063**

For research use only.

Summary

Description	Recombinant rabbit monoclonal antibody
Host	Rabbit
Application	WB,IHC
Reactivity	Human
Conjugation	Unconjugated
Modification	Unmodified
Isotype	IgG
Clonality	Monoclonal
Form	Liquid
Concentration	0.64mg/ml. The concentration of this product may be batch-dependent.
Storage	Aliquot and store at -20°C (valid for 12 months). Avoid freeze/thaw cycles.
Shipping	Ice bags
Buffer	50mM Tris-Glycine(pH 7.4), 0.15M NaCl, 40% Glycerol, 0.01% Sodium azide and 0.05% protective protein
Purification	Affinity Purification

Application

Dilution Ratio	WB 1:500-1:1000,IHC 1:50-1:100
Molecular Weight	Calculated MW: 45 kDa; Observed MW: 110 kDa

Antigen Information

Gene Name	LAMP2
Alternative Names	LAMP2; Lysosome-associated membrane glycoprotein 2; LAMP-2; Lysosome-associated membrane protein 2; CD107 antigen-like family member B; CD107b
Gene ID	3920
SwissProt ID	P13473
Immunogen	A synthetic peptide of human LAMP2A

Background

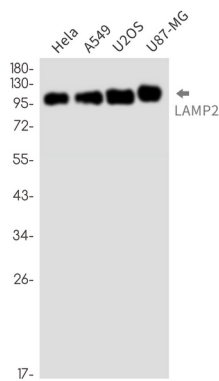
Lysosomal-associated membrane protein 2 (LAMP2, synonyms: LAMPB, CD107b) is a member of a family of membrane

glycoproteins. This glycoprotein provides selectins with carbohydrate ligands. LAMP2 may play a role in tumor cell metastasis. It may also function in the protection, maintenance, and adhesion of the lysosome. Prior to posttranslational modification, Lysosome Associated Membrane Protein 2 (LAMP2) is a ~45 kDa polypeptide.

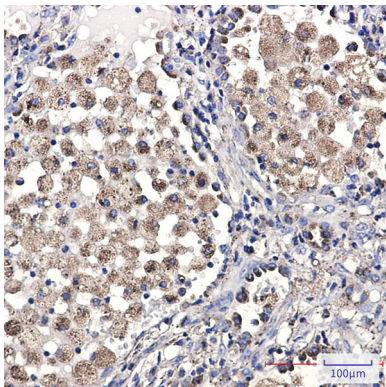
Research Area

Tags & Cell Markers

Image Data



Western blot analysis of LAMP2 in HeLa, A549, U2OS, U87-MG lysates using LAMP2 antibody.



Immunohistochemistry analysis of paraffin-embedded Human lung cancer using LAMP2 antibody. High-pressure and temperature Sodium Citrate pH 6.0 was used for antigen retrieval.