

Product Name: KMT6 Rabbit Monoclonal antibody**Catalog #: AMRe03059**

For research use only.

Summary

Description	Recombinant rabbit monoclonal antibody
Host	Rabbit
Application	WB
Reactivity	Human
Conjugation	Unconjugated
Modification	Unmodified
Isotype	IgG
Clonality	Monoclonal Antibody
Form	Liquid
Concentration	0.18mg/ml. The concentration of this product may be batch-dependent.
Storage	Aliquot and store at -20°C (valid for 12 months). Avoid freeze/thaw cycles.
Shipping	Ice bags
Buffer	50mM Tris-Glycine(pH 7.4), 0.15M NaCl, 40% Glycerol, 0.01% Sodium azide and 0.05% protective protein
Purification	Affinity Purified

Application

Dilution Ratio	WB 1:500-1:1000
Molecular Weight	Calculated MW: 85 kDa; Observed MW: 98 kDa

Antigen Information

Gene Name	EZH2
Alternative Names	WVS; ENX1; KMT6; WVS2; ENX-1; EZH2b; KMT6A; EZH2
Gene ID	2146
SwissProt ID	Q15910
Immunogen	Recombinant protein of human KMT6/EZH2

Background

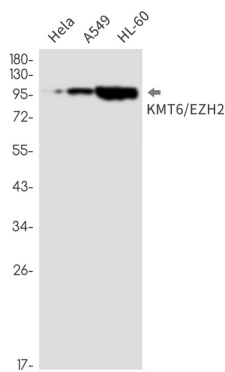
Polycomb group (PcG) protein. Catalytic subunit of the PRC2/EED-EZH2 complex, which methylates 'Lys-9' and 'Lys-27' of histone H3, leading to transcriptional repression of the affected target gene. Able to mono-, di- and trimethylate 'Lys-27' of

histone H3 to form H3K27me1, H3K27me2 and H3K27me3, respectively. Compared to EZH2-containing complexes, it is more abundant in embryonic stem cells and plays a major role in forming H3K27me3, which is required for embryonic stem cell identity and proper differentiation.

Research Area

Epigenetics and Nuclear Signaling

Image Data



Western blot analysis of KMT6/EZH2 in HeLa, A549, HL-60 lysates using KMT6 antibody.