

Product Name: KLF4 Rabbit Monoclonal Antibody
Catalog #: AMRe03058



Summary

| | |
|------------------------|---------------------------------|
| Production Name | KLF4 Rabbit Monoclonal Antibody |
| Description | Rabbit Monoclonal antibody |
| Host | Rabbit |
| Application | WB,IHC-P,IP |
| Reactivity | Human,Mouse,Hamster |

Performance

| | |
|---------------------|--|
| Conjugation | Unconjugated |
| Modification | Unmodified |
| Isotype | IgG |
| Clonality | Monoclonal |
| Form | Liquid |
| Storage | Store at 4°C short term. Aliquot and store at -20°C long term. Avoid freeze/thaw cycles. |
| Buffer | 50mM Tris-Glycine(pH 7.4), 0.15M NaCl, 40% Glycerol, 0.01% Sodium azide and 0.05% protective protein |
| Purification | Affinity Purification |

Immunogen

| | |
|--------------------------|----------------|
| Gene Name | Klf4 |
| Alternative Names | EZF; Zie; Gklf |
| Gene ID | 16600.0 |
| SwissProt ID | Q60793. |

Application

| | |
|-------------------------|--|
| Dilution Ratio | WB: 1:500-1:1000 IHC: 1:50-1:100 IP: 1:20 |
| Molecular Weight | Calculated MW: 52 kDa; Observed MW: 52 kDa |

Background

Product Name: KLF4 Rabbit Monoclonal Antibody
Catalog #: AMRe03058

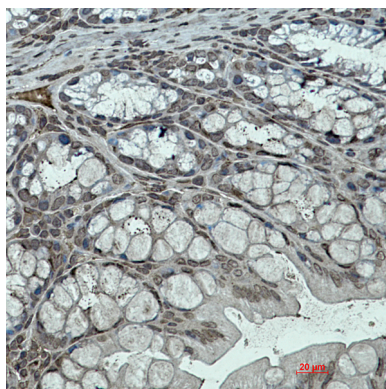


Transcription factor; can act both as activator and as repressor. Binds the 5'-CACCC-3' core sequence.

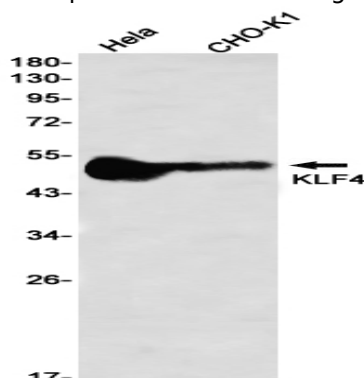
Research Area

Epigenetics and Nuclear Signaling

Image Data



Immunohistochemistry analysis of paraffin-embedded mouse colon using KLF4 antibody. High-pressure and temperature Sodium Citrate pH 6.0 was used for antigen retrieval.



Western blot analysis of KLF4 in HeLa, CHO-K1 lysates using KLF4 antibody.

Note

For research use only.