

Product Name: KIFAP3 Rabbit Monoclonal Antibody**Catalog #: AMRe03057**

For research use only.

Summary

Description	Recombinant rabbit monoclonal antibody
Host	Rabbit
Application	WB,IHC
Reactivity	Human,Rat
Conjugation	Unconjugated
Modification	Unmodified
Isotype	IgG
Clonality	Monoclonal
Form	Liquid
Concentration	0.64mg/ml. The concentration of this product may be batch-dependent.
Storage	Aliquot and store at -20°C (valid for 12 months). Avoid freeze/thaw cycles.
Shipping	Ice bags
Buffer	50mM Tris-Glycine(pH 7.4), 0.15M NaCl, 40% Glycerol, 0.01% Sodium azide and 0.05% protective protein
Purification	Affinity Purification

Application

Dilution Ratio	WB 1:500-1:1000,IHC 1:50-1:100
Molecular Weight	Calculated MW: 91 kDa; Observed MW: 91 kDa

Antigen Information

Gene Name	KIFAP3
Alternative Names	KAP3; KIF3AP; Kifap3; Kinesin associated protein 3; SMAP
Gene ID	22920
SwissProt ID	Q92845
Immunogen	A synthetic peptide of human KIFAP3

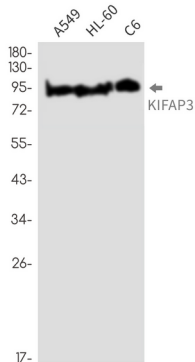
Background

Involved in tethering the chromosomes to the spindle pole and in chromosome movement. Binds to the tail domain of the KIF3A/KIF3B heterodimer to form a heterotrimeric KIF3 complex and may regulate the membrane binding of this complex.

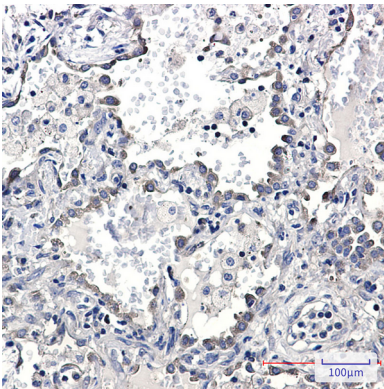
Research Area

Epigenetics and Nuclear Signaling

Image Data



Western blot analysis of KIFAP3 in A549, HL-60, C6 lysates using KIFAP3 antibody.



Immunohistochemistry analysis of paraffin-embedded Human lung cancer using KIFAP3 antibody. High-pressure and temperature Sodium Citrate pH 6.0 was used for antigen retrieval.