

Product Name: IMPDH2 Rabbit Monoclonal antibody**Catalog #: AMRe03048**

For research use only.

Summary

Description	Recombinant rabbit monoclonal antibody
Host	Rabbit
Application	WB,IHC,ICC/IF,IP
Reactivity	Human,Mouse,Rat
Conjugation	Unconjugated
Modification	Unmodified
Isotype	IgG
Clonality	Monoclonal Antibody
Form	Liquid
Concentration	0.16mg/ml. The concentration of this product may be batch-dependent.
Storage	Aliquot and store at -20°C (valid for 12 months). Avoid freeze/thaw cycles.
Shipping	Ice bags
Buffer	50mM Tris-Glycine(pH 7.4), 0.15M NaCl, 40% Glycerol, 0.01% Sodium azide and 0.05% protective protein
Purification	Affinity Purified

Application

Dilution Ratio	WB 1:500-1:1000,IHC 1:50-1:100,ICC/IF 1:50-1:200,IP 1:20-1:50
Molecular Weight	Calculated MW: 56 kDa; Observed MW: 56 kDa

Antigen Information

Gene Name	IMPDH2
Alternative Names	IMPD2; IMPDH 2; IMPDH II; Impdh2
Gene ID	3615
SwissProt ID	P12268
Immunogen	A synthetic peptide of human IMPDH2

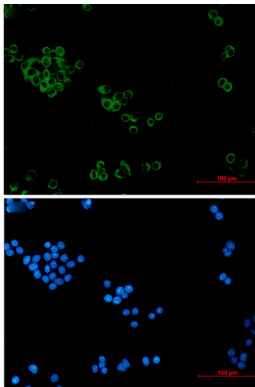
Background

Rate limiting enzyme in the de novo synthesis of guanine nucleotides and therefore is involved in the regulation of cell growth. It may also have a role in the development of malignancy and the growth progression of some tumors.

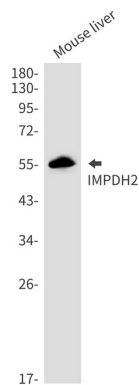
Research Area

Signal Transduction

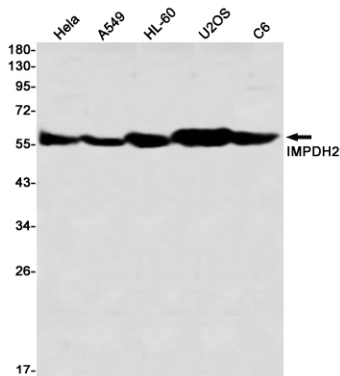
Image Data



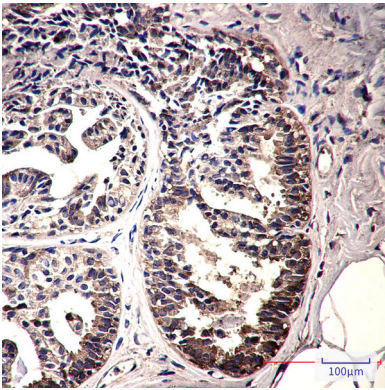
Immunocytochemistry analysis of IMPDH2 (green) in HeLa using IMPDH2 antibody, and DAPI (blue).



Western blot analysis of IMPDH2 in 3T3, mouse liver lysates using IMPDH2 antibody.



Western blot analysis of IMPDH2 in HeLa, A549, HL-60, U2OS, C6 lysates using IMPDH2 antibody



Immunohistochemistry analysis of paraffin-embedded Human breast cancer using IMPDH2 antibody. High-pressure and temperature Sodium Citrate pH 6.0 was used for antigen retrieval.