
Product Name: IGF1 Receptor Rabbit Monoclonal Antibody**Catalog #: AMRe03042**

For research use only.

Summary

Description	Recombinant rabbit monoclonal antibody
Host	Rabbit
Application	WB,IHC
Reactivity	Human
Conjugation	Unconjugated
Modification	Unmodified
Isotype	IgG
Clonality	Monoclonal
Form	Liquid
Concentration	0.64mg/ml. The concentration of this product may be batch-dependent.
Storage	Aliquot and store at -20°C (valid for 12 months). Avoid freeze/thaw cycles.
Shipping	Ice bags
Buffer	50mM Tris-Glycine(pH 7.4), 0.15M NaCl, 40% Glycerol, 0.01% Sodium azide and 0.05% protective protein
Purification	Affinity Purification

Application

Dilution Ratio	WB 1:500-1:1000,IHC 1:50-1:100
Molecular Weight	Calculated MW: 155 kDa; Observed MW: 95 kDa

Antigen Information

Gene Name	IGF1R
Alternative Names	IGF1R; Insulin-like growth factor 1 receptor; Insulin-like growth factor I receptor; IGF-I receptor; CD antigen CD221
Gene ID	3480
SwissProt ID	P08069
Immunogen	Recombinant protein of human IGF-I receptor beta

Background

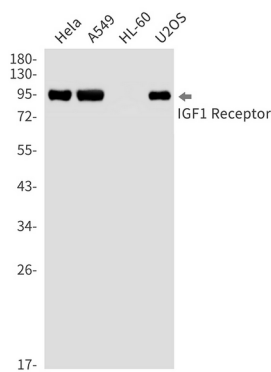
This receptor binds insulin-like growth factor with a high affinity. It has tyrosine kinase activity. The insulin-like growth factor I

receptor plays a critical role in transformation events. Cleavage of the precursor generates alpha and beta subunits. It is highly overexpressed in most malignant tissues where it functions as an anti-apoptotic agent by enhancing cell survival. Alternatively spliced transcript variants encoding distinct isoforms have been found for this gene. [provided by RefSeq, May 2014]

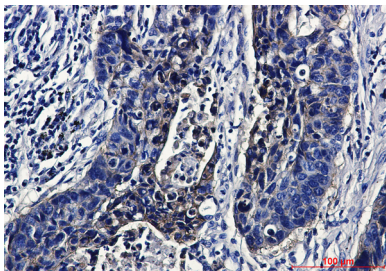
Research Area

Signal Transduction

Image Data



Western blot analysis of IGF1 Receptor in HeLa, A549, HL-60, U2OS lysates using IGF1 Receptor antibody.



Immunohistochemistry analysis of Human lung cancer using IGF1 Receptor antibody. High-pressure and temperature Sodium Citrate pH 6.0 was used for antigen retrieval.