

---

**Product Name: ICAM2 Rabbit Monoclonal Antibody****Catalog #: AMRe03039**

For research use only.

**Summary**

<b>Description</b>	Recombinant rabbit monoclonal antibody
<b>Host</b>	Rabbit
<b>Application</b>	WB,IHC,IP
<b>Reactivity</b>	Human,Mouse
<b>Conjugation</b>	Unconjugated
<b>Modification</b>	Unmodified
<b>Isotype</b>	IgG
<b>Clonality</b>	Monoclonal
<b>Form</b>	Liquid
<b>Concentration</b>	0.64mg/ml. The concentration of this product may be batch-dependent.
<b>Storage</b>	Aliquot and store at -20°C (valid for 12 months). Avoid freeze/thaw cycles.
<b>Shipping</b>	Ice bags
<b>Buffer</b>	50mM Tris-Glycine(pH 7.4), 0.15M NaCl, 40% Glycerol, 0.01% Sodium azide and 0.05% protective protein
<b>Purification</b>	Affinity Purification

**Application**

<b>Dilution Ratio</b>	WB 1:500-1:1000,IHC 1:50-1:100,IP 1:20-1:50
<b>Molecular Weight</b>	Calculated MW: 31 kDa; Observed MW: 50-60 kDa

**Antigen Information**

<b>Gene Name</b>	Icam2
<b>Alternative Names</b>	CD102; Ly-60; Icam-2
<b>Gene ID</b>	15896.0
<b>SwissProt ID</b>	P35330
<b>Immunogen</b>	Recombinant protein of mouse ICAM2

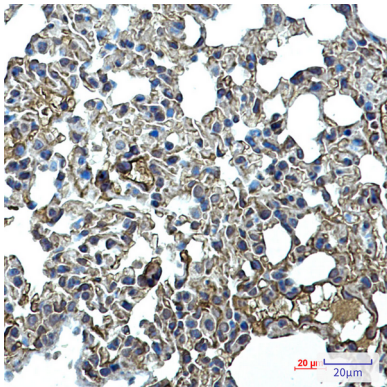
**Background**

ICAM proteins are ligands for the leukocyte adhesion protein LFA-1 (integrin alpha-L/beta-2). ICAM2 may play a role in lymphocyte recirculation by blocking LFA-1-dependent cell adhesion. It mediates adhesive interactions important for antigen-

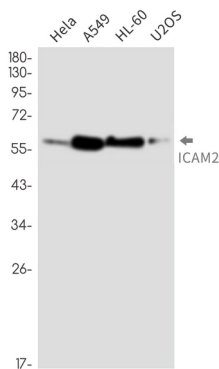
specific immune response, NK-cell mediated clearance, lymphocyte recirculation, and other cellular interactions important for immune response and surveillance.

## Research Area

## Image Data



Immunohistochemistry analysis of paraffin-embedded mouse lung using ICAM2 antibody. High-pressure and temperature Sodium Citrate pH 6.0 was used for antigen retrieval.



Western blot analysis of ICAM2 in HeLa, A549, HL-60, U2OS lysates using ICAM2 antibody.