

**Product Name: HKDC1 Rabbit Monoclonal Antibody****Catalog #: AMRe03031**

For research use only.

**Summary**

<b>Description</b>	Recombinant rabbit monoclonal antibody
<b>Host</b>	Rabbit
<b>Application</b>	WB,IP
<b>Reactivity</b>	Human
<b>Conjugation</b>	Unconjugated
<b>Modification</b>	Unmodified
<b>Isotype</b>	IgG
<b>Clonality</b>	Monoclonal
<b>Form</b>	Liquid
<b>Concentration</b>	0.5mg/ml. The concentration of this product may be batch-dependent.
<b>Storage</b>	Aliquot and store at -20°C (valid for 12 months). Avoid freeze/thaw cycles.
<b>Shipping</b>	Ice bags
<b>Buffer</b>	50mM Tris-Glycine(pH 7.4), 0.15M NaCl, 40% Glycerol, 0.01% Sodium azide and 0.05% protective protein
<b>Purification</b>	Affinity Purification

**Application**

<b>Dilution Ratio</b>	WB 1:500-1:1000,IP 1:20-1:50
<b>Molecular Weight</b>	Calculated MW: 103 kDa; Observed MW: 103 kDa

**Antigen Information**

<b>Gene Name</b>	HKDC1
<b>Alternative Names</b>	Hexokinase domain-containing protein 1
<b>Gene ID</b>	80201
<b>SwissProt ID</b>	Q2TB90
<b>Immunogen</b>	Recombinant protein of human HKDC1

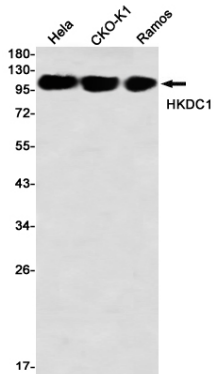
**Background**

Catalyzes the phosphorylation of hexose to hexose 6-phosphate, although at very low level compared to other hexokinases.

## Research Area

Signal Transduction

## Image Data



Western blot analysis of HKDC1 in HeLa, CHO-K1, Ramos lysates using HKDC1 antibody.