

**Product Name: GC1q R Rabbit Monoclonal Antibody**  
**Catalog #: AMRe03009**



## Summary

<b>Production Name</b>	GC1q R Rabbit Monoclonal Antibody
<b>Description</b>	Rabbit Monoclonal antibody
<b>Host</b>	Rabbit
<b>Application</b>	WB, ICC/IF
<b>Reactivity</b>	Human

## Performance

<b>Conjugation</b>	Unconjugated
<b>Modification</b>	Unmodified
<b>Isotype</b>	IgG
<b>Clonality</b>	Monoclonal
<b>Form</b>	Liquid
<b>Storage</b>	Store at 4°C short term. Aliquot and store at -20°C long term. Avoid freeze/thaw cycles.
<b>Buffer</b>	50mM Tris-Glycine(pH 7.4), 0.15M NaCl, 40% Glycerol, 0.01% Sodium azide and 0.05% protective protein
<b>Purification</b>	Affinity Purification

## Immunogen

<b>Gene Name</b>	C1QBP
<b>Alternative Names</b>	C1QBP; GC1QBP; HABP1; SF2P32; Complement component 1 Q subcomponent-binding protein; mitochondrial; GC1q-R protein; Glycoprotein gC1qBP; C1qBP; Hyaluronan-binding protein 1; Mitochondrial matrix protein p32; p33
<b>Gene ID</b>	708
<b>SwissProt ID</b>	Q07021.

## Application

<b>Dilution Ratio</b>	WB: 1:500-1:1000 IF: 1:50-1:200
<b>Molecular Weight</b>	Calculated MW: 31 kDa; Observed MW: 31 kDa

**Product Name: GC1q R Rabbit Monoclonal Antibody**  
**Catalog #: AMRe03009**



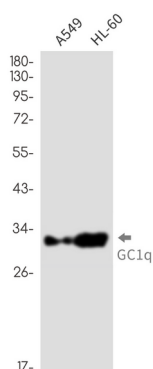
## Background

Binds to the globular "heads" of C1Q thus inhibiting C1 activation.

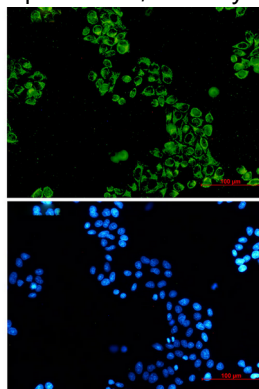
## Research Area

Epigenetics and Nuclear Signaling

## Image Data



Western blot analysis of GC1q R in A549, HL-60 lysates using GC1q R antibody.



Immunocytochemistry analysis of GC1q R (green) in HeLa using GC1q R antibody, and DAPI (blue)

## Note

For research use only.