

**Product Name: FKBP6 Rabbit Monoclonal Antibody****Catalog #: AMRe03001**

For research use only.

**Summary**

<b>Description</b>	Recombinant rabbit monoclonal antibody
<b>Host</b>	Rabbit
<b>Application</b>	WB,IHC
<b>Reactivity</b>	Human,Mouse,Rat
<b>Conjugation</b>	Unconjugated
<b>Modification</b>	Unmodified
<b>Isotype</b>	IgG
<b>Clonality</b>	Monoclonal
<b>Form</b>	Liquid
<b>Concentration</b>	0.53mg/ml. The concentration of this product may be batch-dependent.
<b>Storage</b>	Aliquot and store at -20°C (valid for 12 months). Avoid freeze/thaw cycles.
<b>Shipping</b>	Ice bags
<b>Buffer</b>	50mM Tris-Glycine(pH 7.4), 0.15M NaCl, 40% Glycerol, 0.01% Sodium azide and 0.05% protective protein
<b>Purification</b>	Affinity Purification

**Application**

<b>Dilution Ratio</b>	WB 1:500-1:1000,IHC 1:50-1:100
<b>Molecular Weight</b>	Calculated MW: 37 kDa; Observed MW: 37 kDa

**Antigen Information**

<b>Gene Name</b>	FKBP6
<b>Alternative Names</b>	FKBP36
<b>Gene ID</b>	8468
<b>SwissProt ID</b>	O75344
<b>Immunogen</b>	A synthetic peptide of human FKBP6

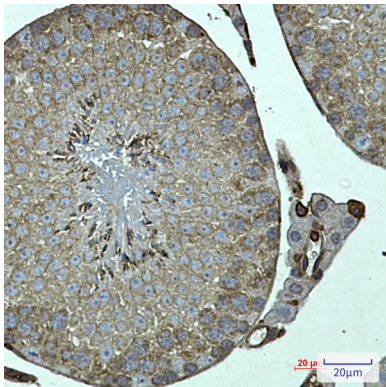
**Background**

Co-chaperone required during spermatogenesis to repress transposable elements and prevent their mobilization, which is essential for the germline integrity.

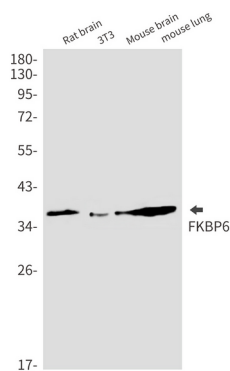
## Research Area

Immunology

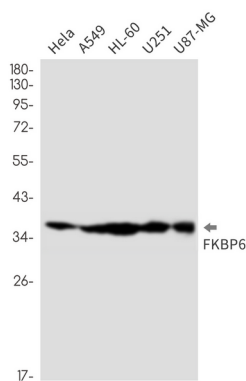
## Image Data



Immunohistochemistry analysis of paraffin-embedded mouse testis using FKBP6 antibody. High-pressure and temperature Sodium Citrate pH 6.0 was used for antigen retrieval.



Western blot analysis of FKBP6 in rat brain, 3T3, mouse brain, mouse lung lysates using FKBP6 antibody.



Western blot analysis of FKBP6 in HeLa, A549, HL-60, U251, U87-MG lysates using FKBP6 antibody