

Product Name: Eg5 Rabbit Monoclonal Antibody**Catalog #: AMRe02982**

For research use only.

Summary

Description	Recombinant rabbit monoclonal antibody
Host	Rabbit
Application	WB,IHC,ICC/IF,IP
Reactivity	Human
Conjugation	Unconjugated
Modification	Unmodified
Isotype	IgG
Clonality	Monoclonal
Form	Liquid
Concentration	0.51mg/ml. The concentration of this product may be batch-dependent.
Storage	Aliquot and store at -20°C (valid for 12 months). Avoid freeze/thaw cycles.
Shipping	Ice bags
Buffer	50mM Tris-Glycine(pH 7.4), 0.15M NaCl, 40% Glycerol, 0.01% Sodium azide and 0.05% protective protein
Purification	Affinity Purification

Application

Dilution Ratio	WB 1:500-1:1000,IHC 1:50-1:100,ICC/IF 1:50-1:200,IP 1:20-1:50
Molecular Weight	Calculated MW: 119 kDa; Observed MW: 119 kDa

Antigen Information

Gene Name	KIF11
Alternative Names	KIF11; EG5; KNSL1; TRIP5; Kinesin-like protein KIF11; Kinesin-like protein 1; Kinesin-like spindle protein HKSP; Kinesin-related motor protein Eg5; Thyroid receptor-interacting protein 5; TR-interacting protein 5; TRIP-5
Gene ID	3832
SwissProt ID	P52732
Immunogen	Recombinant protein of human Eg5

Background

Motor protein required for establishing a bipolar spindle. Blocking of KIF11 prevents centrosome migration and arrest cells in mitosis with monoastal microtubule arrays.

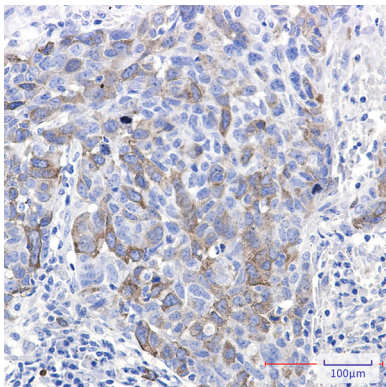
Research Area

Signal Transduction

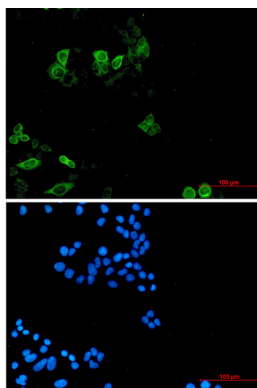
Image Data



Western blot analysis of Eg5 in HeLa, A549, HL-60, U2OS, U87-MG lysates using Eg5 antibody.



Immunohistochemistry analysis of paraffin-embedded Human lung cancer using Eg5 antibody. High-pressure and temperature Sodium Citrate pH 6.0 was used for antigen retrieval.



Immunocytochemistry analysis of Eg5 (green) in HeLa using Eg5 antibody, and DAPI (blue)