

**Product Name: Eg5 Rabbit Monoclonal Antibody****Catalog #: AMRe02981**

For research use only.

**Summary**

<b>Description</b>	Recombinant rabbit monoclonal antibody
<b>Host</b>	Rabbit
<b>Application</b>	WB, ICC/IF
<b>Reactivity</b>	Human, Mouse, Rat
<b>Conjugation</b>	Unconjugated
<b>Modification</b>	Unmodified
<b>Isotype</b>	IgG
<b>Clonality</b>	Monoclonal
<b>Form</b>	Liquid
<b>Concentration</b>	0.51mg/ml. The concentration of this product may be batch-dependent.
<b>Storage</b>	Aliquot and store at -20°C (valid for 12 months). Avoid freeze/thaw cycles.
<b>Shipping</b>	Ice bags
<b>Buffer</b>	50mM Tris-Glycine(pH 7.4), 0.15M NaCl, 40% Glycerol, 0.01% Sodium azide and 0.05% protective protein
<b>Purification</b>	Affinity Purification

**Application**

<b>Dilution Ratio</b>	WB 1:500-1:1000, ICC/IF 1:50-1:200
<b>Molecular Weight</b>	Calculated MW: 119 kDa; Observed MW: 119 kDa

**Antigen Information**

<b>Gene Name</b>	KIF11
<b>Alternative Names</b>	KIF11; EG5; KNSL1; TRIP5; Kinesin-like protein KIF11; Kinesin-like protein 1; Kinesin-like spindle protein HKSP; Kinesin-related motor protein Eg5; Thyroid receptor-interacting protein 5; TR-interacting protein 5; TRIP-5
<b>Gene ID</b>	3832
<b>SwissProt ID</b>	P52732
<b>Immunogen</b>	Recombinant protein of human Eg5

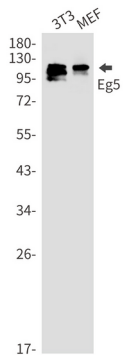
**Background**

Motor protein required for establishing a bipolar spindle. Blocking of KIF11 prevents centrosome migration and arrest cells in mitosis with monoastal microtubule arrays.

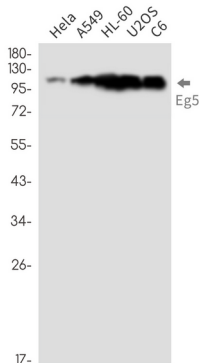
## Research Area

Signal Transduction

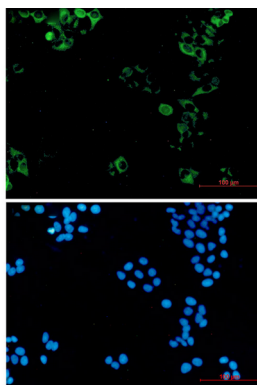
## Image Data



Western blot analysis of Eg5 in 3T3, MEF lysates using Eg5 antibody.



Western blot analysis of Eg5 in HeLa, A549, HL-60, U2OS, C6 lysates using Eg5 antibody.



Immunocytochemistry analysis of Eg5 (green) in HeLa using Eg5 antibody, and DAPI (blue)