
Product Name: EFEMP1 Rabbit Monoclonal Antibody**Catalog #: AMRe02980**

For research use only.

Summary

Description	Recombinant rabbit monoclonal antibody
Host	Rabbit
Application	WB,IHC,IP
Reactivity	Human
Conjugation	Unconjugated
Modification	Unmodified
Isotype	IgG
Clonality	Monoclonal
Form	Liquid
Concentration	0.64mg/ml. The concentration of this product may be batch-dependent.
Storage	Aliquot and store at -20°C (valid for 12 months). Avoid freeze/thaw cycles.
Shipping	Ice bags
Buffer	50mM Tris-Glycine(pH 7.4), 0.15M NaCl, 40% Glycerol, 0.01% Sodium azide and 0.05% protective protein
Purification	Affinity Purification

Application

Dilution Ratio	WB 1:500-1:1000,IHC 1:50-1:100,IP 1:20-1:50
Molecular Weight	Calculated MW: 55 kDa; Observed MW: 55 kDa

Antigen Information

Gene Name	EFEMP1
Alternative Names	DHRD; DRAD; FBNL; MLVT; MTLV; S1-5; FBLN3; FIBL-3; Fibulin-3
Gene ID	2202
SwissProt ID	Q12805
Immunogen	Recombinant protein of human EFEMP1/Fibulin-3

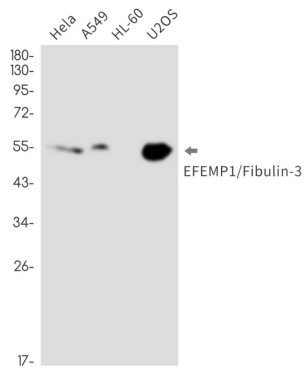
Background

Binds EGFR, the EGF receptor, inducing EGFR autophosphorylation and the activation of downstream signaling pathways.

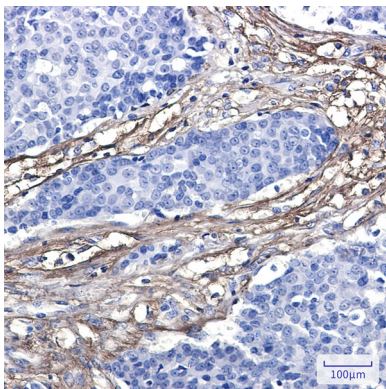
Research Area

Signal ; Signaling Pathway; Calcium Signaling; Calcium Binding Proteins; Neuroscience; Sensory System; Visual system

Image Data



Western blot analysis of EFEMP1/Fibulin3 in HeLa, A549, HL-60, U2OS lysates using EFEMP1 antibody.



Immunohistochemistry analysis of paraffin-embedded Human breast cancer using EFEMP1/Fibulin3 antibody. High-pressure and temperature Sodium Citrate pH 6.0 was used for antigen retrieval.