
Product Name: Elongation Factor 1A1 Rabbit Monoclonal Antibody**Catalog #: AMRe02977**

For research use only.

Summary

Description	Recombinant rabbit monoclonal antibody
Host	Rabbit
Application	WB,IHC,ICC/IF
Reactivity	Human,Rat
Conjugation	Unconjugated
Modification	Unmodified
Isotype	IgG
Clonality	Monoclonal
Form	Liquid
Concentration	0.53mg/ml. The concentration of this product may be batch-dependent.
Storage	Aliquot and store at -20°C (valid for 12 months). Avoid freeze/thaw cycles.
Shipping	Ice bags
Buffer	50mM Tris-Glycine(pH 7.4), 0.15M NaCl, 40% Glycerol, 0.01% Sodium azide and 0.05% protective protein
Purification	Affinity Purification

Application

Dilution Ratio	WB 1:500-1:1000,IHC 1:50-1:100,ICC/IF 1:50-1:200
Molecular Weight	Calculated MW: 50 kDa; Observed MW: 50 kDa

Antigen Information

Gene Name	EEF1A1
Alternative Names	EEF1A1; CCS-3; CCS3; EEF-1; EEF1A; EF-Tu; EF1A; GRAF-1EF; LENG7; PTI1; eEF1A-1
Gene ID	1915
SwissProt ID	P68104
Immunogen	A synthetic peptide of human eEF1A1

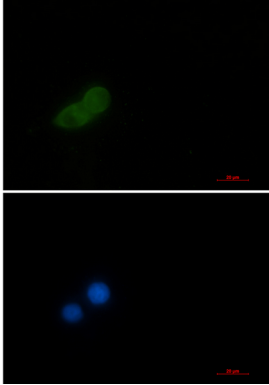
Background

This protein promotes the GTP-dependent binding of aminoacyl-tRNA to the A-site of ribosomes during protein biosynthesis.

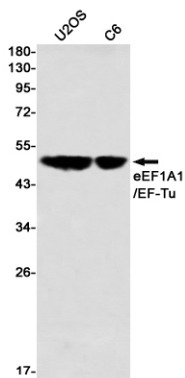
Research Area

Epigenetics and Nuclear Signaling

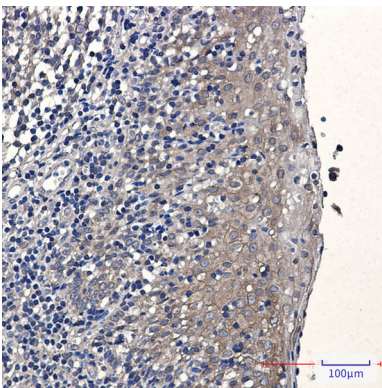
Image Data



Immunocytochemistry analysis of Elongation Factor 1A1 (green) in HeLa using Elongation Factor 1A1 antibody, and DAPI (blue).



Western blot analysis of eEF1A1/EFTu in U2OS, C6 lysates using eEF1A1/EFTu antibody.



Immunohistochemistry analysis of paraffin-embedded Human tonsil using eEF1A1/EFTu antibody. High-pressure and temperature Sodium Citrate pH 6.0 was used for antigen retrieval.