

**Product Name: Cytochrome P450 2D6 Rabbit Monoclonal antibody****Catalog #: AMRe02962**

For research use only.

**Summary**

<b>Description</b>	Recombinant rabbit monoclonal antibody
<b>Host</b>	Rabbit
<b>Application</b>	WB,IHC,ICC/IF
<b>Reactivity</b>	Human
<b>Conjugation</b>	Unconjugated
<b>Modification</b>	Unmodified
<b>Isotype</b>	IgG
<b>Clonality</b>	Monoclonal Antibody
<b>Form</b>	Liquid
<b>Concentration</b>	0.16mg/ml. The concentration of this product may be batch-dependent.
<b>Storage</b>	Aliquot and store at -20°C (valid for 12 months). Avoid freeze/thaw cycles.
<b>Shipping</b>	Ice bags
<b>Buffer</b>	50mM Tris-Glycine(pH 7.4), 0.15M NaCl, 40% Glycerol, 0.01% Sodium azide and 0.05% protective protein
<b>Purification</b>	Affinity Purified

**Application**

<b>Dilution Ratio</b>	WB 1:500-1:1000,IHC 1:50-1:100,ICC/IF 1:50-1:200
<b>Molecular Weight</b>	Calculated MW: 56 kDa; Observed MW: 50 kDa

**Antigen Information**

<b>Gene Name</b>	CYP2D6
<b>Alternative Names</b>	CYP2D6; CYP2DL1; Cytochrome P450 2D6; CYP1D6; Cytochrome P450-DB1; Debrisoquine 4-hydroxylase
<b>Gene ID</b>	1565
<b>SwissProt ID</b>	P10635
<b>Immunogen</b>	Recombinant protein of human CYP2D6

**Background**

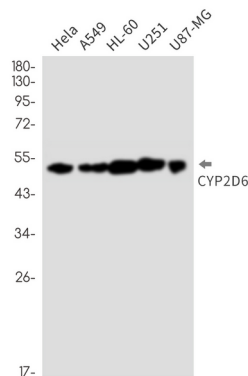
Cytochrome P450 2D6 is a member of the cytochrome P450 superfamily of enzymes. The cytochrome P450 proteins are

monooxygenases which catalyze many reactions involved in drug metabolism and synthesis of cholesterol, steroids and other lipids.

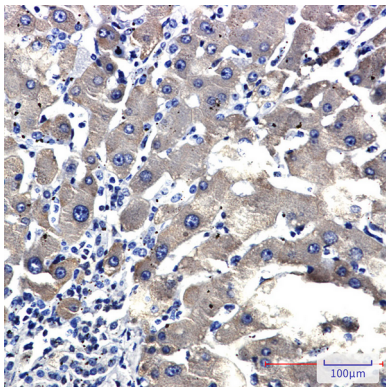
## Research Area

Cardiovascular

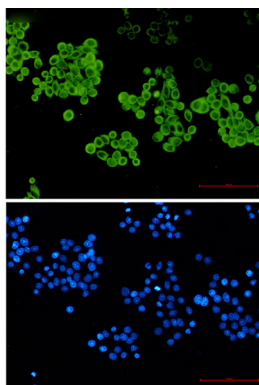
## Image Data



Western blot analysis of CYP2D6 in HeLa, A549, HL-60, U251, U87-MG lysates using Cytochrome P450 2D6 antibody.



Immunohistochemistry analysis of paraffin-embedded liver cancer using CYP2D6 antibody. High-pressure and temperature Sodium Citrate pH 6.0 was used for antigen retrieval.



Immunocytochemistry analysis of CYP2D6 (green) in HeLa using CYP2D6 antibody and DAPI (blue)