
Product Name: CTBP2 Rabbit Monoclonal Antibody**Catalog #: AMRe02957**

For research use only.

Summary

Description	Recombinant rabbit monoclonal antibody
Host	Rabbit
Application	WB,IHC,ICC/IF
Reactivity	Human,Mouse,Rat
Conjugation	Unconjugated
Modification	Unmodified
Isotype	IgG
Clonality	Monoclonal
Form	Liquid
Concentration	0.39mg/ml. The concentration of this product may be batch-dependent.
Storage	Aliquot and store at -20°C (valid for 12 months). Avoid freeze/thaw cycles.
Shipping	Ice bags
Buffer	50mM Tris-Glycine(pH 7.4), 0.15M NaCl, 40% Glycerol, 0.01% Sodium azide and 0.05% protective protein
Purification	Affinity Purification

Application

Dilution Ratio	WB 1:500-1:1000,IHC 1:50-1:100,ICC/IF 1:50-1:200
Molecular Weight	Calculated MW: 49 kDa; Observed MW: 49 kDa

Antigen Information

Gene Name	CTBP2
Alternative Names	C-terminal-binding protein 2
Gene ID	1488
SwissProt ID	P56545
Immunogen	A synthetic peptide of human CTBP2

Background

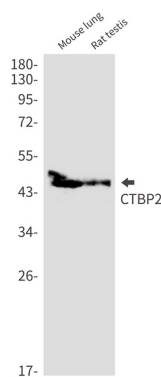
This gene produces alternative transcripts encoding two distinct proteins. One protein is a transcriptional repressor, while the other isoform is a major component of specialized synapses known as synaptic ribbons. Both proteins contain a NAD⁺ binding

domain similar to NAD⁺-dependent 2-hydroxyacid dehydrogenases. A portion of the 3' untranslated region was used to map this gene to chromosome 21q21.3; however, it was noted that similar loci elsewhere in the genome are likely. Blast analysis shows that this gene is present on chromosome 10. Several transcript variants encoding two different isoforms have been found for this gene. [provided by RefSeq, Feb 2014]

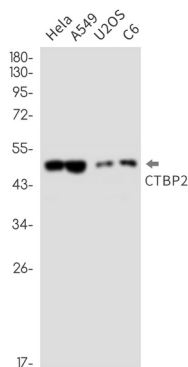
Research Area

Microbiology

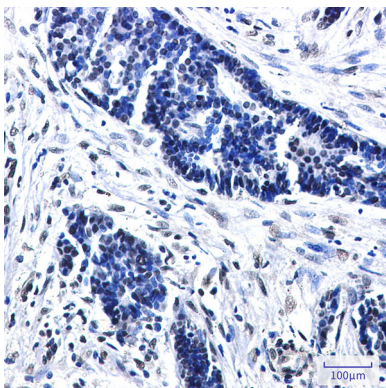
Image Data



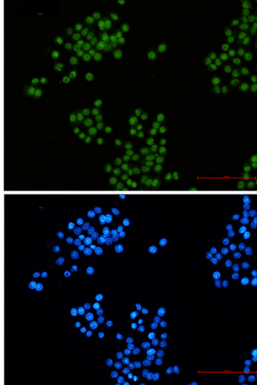
Western blot analysis of CTBP2 in mouse lung, rat testis lysates using CTBP2 antibody.



Western blot analysis of CTBP2 in HeLa, A549, U2OS, C6 lysates using CTBP2 antibody.



Immunohistochemistry analysis of paraffin-embedded Human breast cancer using CTBP2 antibody. High-pressure and temperature Sodium Citrate pH 6.0 was used for antigen retrieval.



Immunocytochemistry analysis of CTBP2 (green) in hela using CTBP2 antibody, and DAPI(blue).