

Product Name: CTBP1 Rabbit Monoclonal Antibody**Catalog #: AMRe02956**

For research use only.

Summary

Description	Recombinant rabbit monoclonal antibody
Host	Rabbit
Application	WB,IHC,ICC/IF,IP
Reactivity	Human
Conjugation	Unconjugated
Modification	Unmodified
Isotype	IgG
Clonality	Monoclonal
Form	Liquid
Concentration	0.51mg/ml. The concentration of this product may be batch-dependent.
Storage	Aliquot and store at -20°C (valid for 12 months). Avoid freeze/thaw cycles.
Shipping	Ice bags
Buffer	50mM Tris-Glycine(pH 7.4), 0.15M NaCl, 40% Glycerol, 0.01% Sodium azide and 0.05% protective protein
Purification	Affinity Purification

Application

Dilution Ratio	WB 1:500-1:1000,IHC 1:50-1:100,ICC/IF 1:50-1:200,IP 1:20-1:50
Molecular Weight	Calculated MW: 48 kDa; Observed MW: 48 kDa

Antigen Information

Gene Name	CTBP1
Alternative Names	CTBP1; CTBP; C-terminal-binding protein 1; CtBP1
Gene ID	1487
SwissProt ID	Q13363
Immunogen	A synthetic peptide of human CtBP1

Background

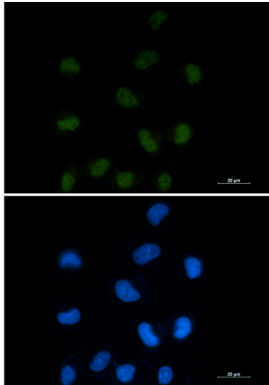
Involved in controlling the equilibrium between tubular and stacked structures in the Golgi complex. Functions in brown adipose tissue (BAT) differentiation. Corepressor targeting diverse transcription regulators such as GLIS2. Has dehydrogenase

activity.

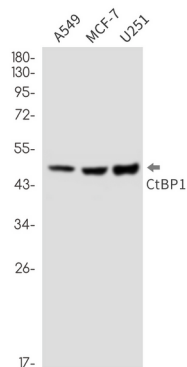
Research Area

Cell Biology

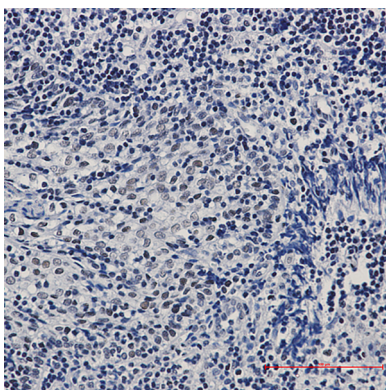
Image Data



Immunocytochemistry analysis of CTBP1 (green) in HEPG2 using CTBP1 antibody, and DAPI (blue).



Western blot analysis of CtBP1 in A549, MCF-7, U251 lysates using CtBP1 antibody.



Immunohistochemistry analysis of paraffin-embedded Human tonsil using CtBP1 antibody. High-pressure and temperature Sodium Citrate pH 6.0 was used for antigen retrieval.