

Product Name: CSNK2A1 Rabbit Monoclonal Antibody**Catalog #: AMRe02955**

For research use only.

Summary

Description	Recombinant rabbit monoclonal antibody
Host	Rabbit
Application	WB
Reactivity	Human, Mouse, Rat
Conjugation	Unconjugated
Modification	Unmodified
Isotype	IgG
Clonality	Monoclonal
Form	Liquid
Concentration	0.5mg/ml. The concentration of this product may be batch-dependent.
Storage	Aliquot and store at -20°C (valid for 12 months). Avoid freeze/thaw cycles.
Shipping	Ice bags
Buffer	50mM Tris-Glycine(pH 7.4), 0.15M NaCl, 40% Glycerol, 0.01% Sodium azide and 0.05% protective protein
Purification	Affinity Purification

Application

Dilution Ratio	WB 1:500-1:1000
Molecular Weight	Calculated MW: 45 kDa; Observed MW: 45 kDa

Antigen Information

Gene Name	CSNK2A1
Alternative Names	CSNK2A1; CK2A1; Casein kinase II subunit alpha; CK II alpha
Gene ID	1457
SwissProt ID	P68400
Immunogen	A synthetic peptide of human CSNK2A1

Background

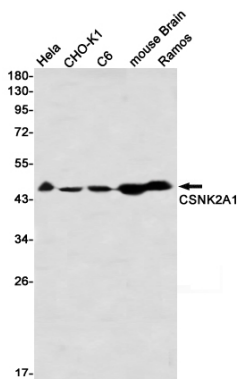
Catalytic subunit of a constitutively active serine/threonine-protein kinase complex that phosphorylates a large number of substrates containing acidic residues C-terminal to the phosphorylated serine or threonine. Regulates numerous cellular

processes, such as cell cycle progression, apoptosis and transcription, as well as viral infection. May act as a regulatory node which integrates and coordinates numerous signals leading to an appropriate cellular response.

Research Area

Cell Biology

Image Data



Western blot analysis of CSNK2A1 in HeLa, CHO-K1, C6, mouse Brain, Ramos lysates using CSNK2A1 antibody.